



ELECTRONIC COPY

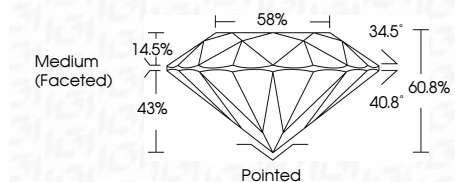
LG812625414 Report verification at igi.org



June 20, 2026 IGI Report Number LG812625414 Description LABORATORY GROWN DIAMOND Shape and Cutting Style ROUND BRILLIANT Measurements 7.53 - 7.55 X 4.59 MM

GRADING RESULTS

Carat Weight 1.59 CARAT Color Grade E Clarity Grade VVS 2 Cut Grade IDEAL



ADDITIONAL GRADING INFORMATION

Polish EXCELLENT Symmetry EXCELLENT Fluorescence NONE Inscription(s) LG812625414 Comments: This Laboratory Grown Diamond was created by Chemical Vapor Deposition (CVD) growth process. Type IIa



Summary table of diamond characteristics: June 20, 2026, IGI Report No LG812625414, ROUND BRILLIANT, 7.53 - 7.55 X 4.59 MM, 1.59 CARAT, E, VVS 2, IDEAL, 60.8%, 58%, Medium (Faceted), Pointed, EXCELLENT, EXCELLENT, NONE, LG812625414

June 20, 2026 IGI Report Number LG812625414 Description LABORATORY GROWN DIAMOND Shape and Cutting Style ROUND BRILLIANT Measurements 7.53 - 7.55 X 4.59 MM

GRADING RESULTS

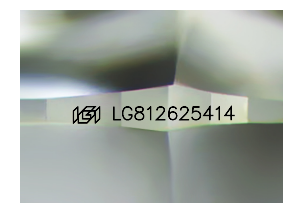
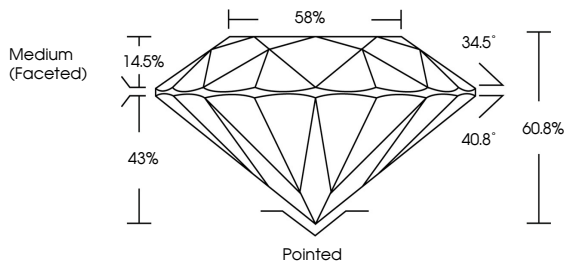
Carat Weight 1.59 CARAT Color Grade E Clarity Grade VVS 2 Cut Grade IDEAL

ADDITIONAL GRADING INFORMATION

Polish EXCELLENT Symmetry EXCELLENT Fluorescence NONE Inscription(s) LG812625414

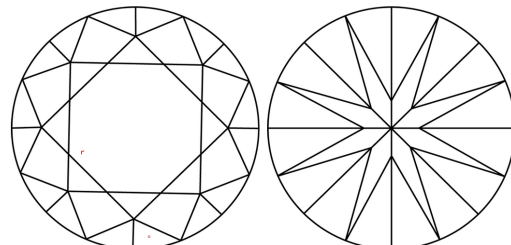
Comments: This Laboratory Grown Diamond was created by Chemical Vapor Deposition (CVD) growth process. Type IIa

PROPORTIONS



Sample Image Used

CLARITY CHARACTERISTICS



KEY TO SYMBOLS

Red symbols indicate internal characteristics. Green symbols indicate external characteristics.

COLOR

Color scale table: D, E, F, G, H, I, J, Faint, Very Light, Light

CLARITY

Clarity scale table: FL, IF, VVS 1-2, VS 1-2, SI 1-2, I 1-3, Flawless, Internally Flawless, Very Very Slightly Included, Very Slightly Included, Slightly Included, Included

