



**ELECTRONIC COPY**

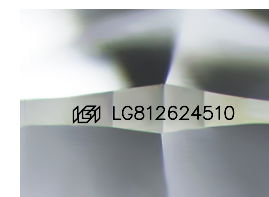
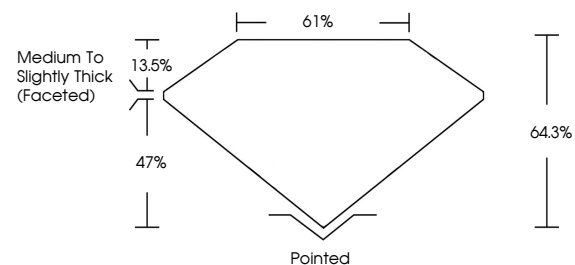
LG812624510  
Report verification at igi.org



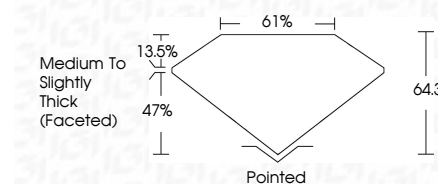
June 22, 2026  
IGI Report Number **LG812624510**  
Description **LABORATORY GROWN DIAMOND**  
Shape and Cutting Style **CUSHION MODIFIED BRILLIANT**  
Measurements **11.42 X 8.52 X 5.48 MM**  
**GRADING RESULTS**  
Carat Weight **4.07 CARATS**  
Color Grade **G**  
Clarity Grade **VVS 1**

June 22, 2026  
IGI Report Number **LG812624510**  
Description **LABORATORY GROWN DIAMOND**  
Shape and Cutting Style **CUSHION MODIFIED BRILLIANT**  
Measurements **11.42 X 8.52 X 5.48 MM**  
**GRADING RESULTS**  
Carat Weight **4.07 CARATS**  
Color Grade **G**  
Clarity Grade **VVS 1**

**PROPORTIONS**



Sample Image Used



**ADDITIONAL GRADING INFORMATION**

Polish **EXCELLENT**  
Symmetry **EXCELLENT**  
Fluorescence **NONE**  
Inscription(s) **IGI LG812624510**

Comments: This Laboratory Grown Diamond was created by Chemical Vapor Deposition (CVD) growth process.  
Type IIa

**ADDITIONAL GRADING INFORMATION**

Polish **EXCELLENT**  
Symmetry **EXCELLENT**  
Fluorescence **NONE**  
Inscription(s) **IGI LG812624510**  
Comments: This Laboratory Grown Diamond was created by Chemical Vapor Deposition (CVD) growth process.  
Type IIa

**COLOR**

D E F G H I J Faint Very Light Light

**CLARITY**

FL	IF	VS <sup>1-2</sup>	VS <sup>1-2</sup>	SI <sup>1-2</sup>	I <sup>1-3</sup>
Flawless	Internally Flawless	Very Very Slightly Included	Very Slightly Included	Slightly Included	Included



**IGI**



June 22, 2026  
IGI Report No **LG812624510**  
**CUSHION MODIFIED BRILLIANT**  
**11.42 X 8.52 X 5.48 MM**  
**4.07 CARATS**  
Carat Weight **4.07 CARATS**  
Color Grade **G**  
Clarity Grade **VVS 1**  
Depth **64.3%**  
Table **61%**  
Girdle **Medium to Slightly Thick (Faceted)**  
Culet **Pointed**  
Polish **EXCELLENT**  
Symmetry **EXCELLENT**  
Fluorescence **NONE**  
Inscription(s) **IGI LG812624510**

Comments: This Laboratory Grown Diamond was created by Chemical Vapor Deposition (CVD) growth process.  
Type IIa