



June 25, 2026

IGI Report Number LG812610074
ROUND BRILLIANT
LABORATORY GROWN DIAMOND
5.09 - 5.14 X 3.17 MM

Carat Weight 0.52 CARAT
Color Grade D
Clarity Grade VS 1
Cut Grade IDEAL
Polish EXCELLENT
Symmetry VERY GOOD
Fluorescence NONE
Inscription(s) IGI LG812610074

Comments: As Grown - No indication of post-growth treatment. This Laboratory Grown Diamond was created by High Pressure High Temperature (HPHT) growth process. Type II

LABORATORY GROWN DIAMOND REPORT

June 25, 2026
IGI Report Number **LG812610074**
Description **LABORATORY GROWN DIAMOND**
Shape and Cutting Style **ROUND BRILLIANT**
Measurements **5.09 - 5.14 X 3.17 MM**

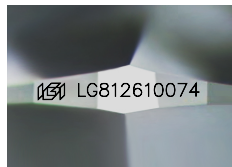
GRADING RESULTS

Carat Weight 0.52 CARAT
Color Grade D
Clarity Grade VS 1
Cut Grade IDEAL

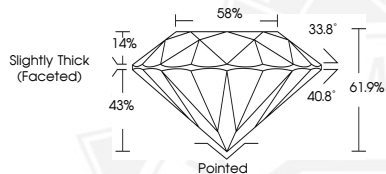
ADDITIONAL GRADING INFORMATION

Polish EXCELLENT
Symmetry VERY GOOD
Fluorescence NONE
Inscription(s) IGI LG812610074

Comments: As Grown - No indication of post-growth treatment. This Laboratory Grown Diamond was created by High Pressure High Temperature (HPHT) growth process. Type II



Sample Image Used



June 25, 2026

IGI Report Number LG812610074
ROUND BRILLIANT
LABORATORY GROWN DIAMOND
5.09 - 5.14 X 3.17 MM

Carat Weight 0.52 CARAT
Color Grade D
Clarity Grade VS 1
Cut Grade IDEAL
Polish EXCELLENT
Symmetry VERY GOOD
Fluorescence NONE
Inscription(s) IGI LG812610074

Comments: As Grown - No indication of post-growth treatment. This Laboratory Grown Diamond was created by High Pressure High Temperature (HPHT) growth process. Type II



THIS DOCUMENT WAS PRODUCED WITH THE FOLLOWING SECURITY MEASURES: SPECIAL DOCUMENT PAPER, INK SCREENS, WATERMARK, BACKGROUND DESIGNS, HOLOGRAM AND OTHER SECURITY FEATURES NOT LISTED AND DO EXCEED DOCUMENT SECURITY INDUSTRY GUIDELINES.