



ELECTRONIC COPY

LG812606783
Report verification at igi.org



July 3, 2026
IGI Report Number LG812606783
Description LABORATORY GROWN DIAMOND
Shape and Cutting Style ROUND BRILLIANT
Measurements 7.54 - 7.57 X 4.56 MM
GRADING RESULTS
Carat Weight 1.56 CARAT
Color Grade D
Clarity Grade VVS 2
Cut Grade IDEAL

July 3, 2026
IGI Report Number LG812606783
Description LABORATORY GROWN DIAMOND
Shape and Cutting Style ROUND BRILLIANT
Measurements 7.54 - 7.57 X 4.56 MM

GRADING RESULTS

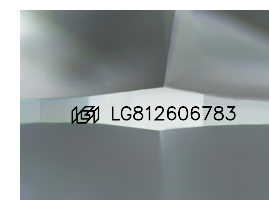
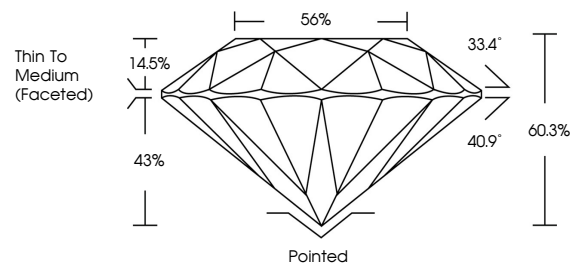
Carat Weight 1.56 CARAT
Color Grade D
Clarity Grade VVS 2
Cut Grade IDEAL

ADDITIONAL GRADING INFORMATION

Polish EXCELLENT
Symmetry EXCELLENT
Fluorescence NONE
Inscription(s) LG812606783

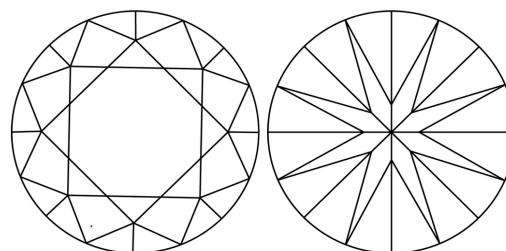
Comments: This Laboratory Grown Diamond was created by Chemical Vapor Deposition (CVD) growth process. Type IIa

PROPORTIONS



Sample Image Used

CLARITY CHARACTERISTICS



KEY TO SYMBOLS

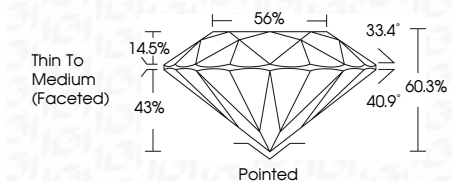
Red symbols indicate internal characteristics.
Green symbols indicate external characteristics.

COLOR

D E F G H I J Faint Very Light Light

CLARITY

FL IF VVS 1-2 VS 1-2 SI 1-2 I 1-3
Flawless Internally Flawless Very Very Slightly Included Very Slightly Included Slightly Included Included



ADDITIONAL GRADING INFORMATION

Polish EXCELLENT
Symmetry EXCELLENT
Fluorescence NONE
Inscription(s) LG812606783
Comments: This Laboratory Grown Diamond was created by Chemical Vapor Deposition (CVD) growth process. Type IIa



IGI



July 3, 2026
IGI Report No LG812606783
ROUND BRILLIANT
7.54 - 7.57 X 4.56 MM
1.56 CARAT
Color Grade D
Clarity Grade VVS 2
Cut Grade IDEAL
Depth 60.3%
Table 56%
Thin To Medium (Faceted)
Culet Pointed
Polish EXCELLENT
Symmetry EXCELLENT
Fluorescence NONE
Inscription(s) LG812606783
Comments: This Laboratory Grown Diamond was created by Chemical Vapor Deposition (CVD) growth process. Type IIa