



ELECTRONIC COPY

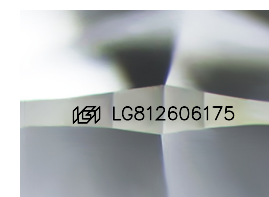
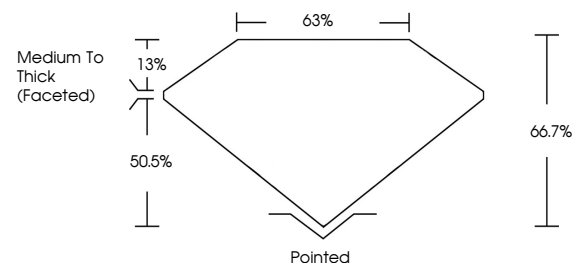
LG812606175
Report verification at igi.org



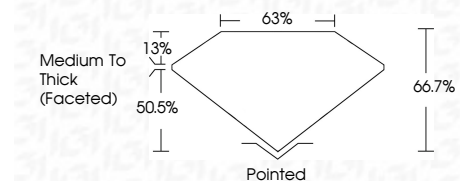
June 20, 2026
IGI Report Number LG812606175
Description LABORATORY GROWN DIAMOND
Shape and Cutting Style CUSHION MODIFIED BRILLIANT
Measurements 11.19 X 8.33 X 5.56 MM
GRADING RESULTS
Carat Weight 4.04 CARATS
Color Grade E
Clarity Grade VVS 2

June 20, 2026
IGI Report Number LG812606175
Description LABORATORY GROWN DIAMOND
Shape and Cutting Style CUSHION MODIFIED BRILLIANT
Measurements 11.19 X 8.33 X 5.56 MM

PROPORTIONS



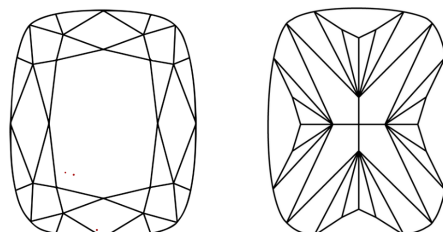
Sample Image Used



GRADING RESULTS

Carat Weight 4.04 CARATS
Color Grade E
Clarity Grade VVS 2

CLARITY CHARACTERISTICS



KEY TO SYMBOLS

Red symbols indicate internal characteristics.
Green symbols indicate external characteristics.

COLOR

D E F G H I J Faint Very Light Light

CLARITY

FL IF VVS 1-2 VS 1-2 SI 1-2 I 1-3
Flawless Internally Flawless Very Very Slightly Included Very Slightly Included Slightly Included Included

ADDITIONAL GRADING INFORMATION

Polish EXCELLENT
Symmetry EXCELLENT
Fluorescence NONE
Inscription(s) IGI LG812606175
Comments: This Laboratory Grown Diamond was created by Chemical Vapor Deposition (CVD) growth process. Type IIa

ADDITIONAL GRADING INFORMATION

Polish EXCELLENT
Symmetry EXCELLENT
Fluorescence NONE
Inscription(s) IGI LG812606175

Comments: This Laboratory Grown Diamond was created by Chemical Vapor Deposition (CVD) growth process. Type IIa



June 20, 2026
IGI Report No LG812606175
CUSHION MODIFIED BRILLIANT
11.19 X 8.33 X 5.56 MM
4.04 CARATS
E
VVS 2
66.7%
63%
Medium To Thick (Faceted)
Pointed
EXCELLENT
EXCELLENT
NONE
IGI LG812606175
Comments: This Laboratory Grown Diamond was created by Chemical Vapor Deposition (CVD) growth process. Type IIa