



ELECTRONIC COPY

LG812602469 Report verification at igi.org



June 20, 2026 IGI Report Number LG812602469 Description LABORATORY GROWN DIAMOND Shape and Cutting Style CUT CORNERED RECTANGULAR MODIFIED BRILLIANT Measurements 10.35 X 7.04 X 4.61 MM GRADING RESULTS Carat Weight 3.02 CARATS Color Grade E Clarity Grade VS 2

June 20, 2026 IGI Report Number LG812602469 Description LABORATORY GROWN DIAMOND Shape and Cutting Style CUT CORNERED RECTANGULAR MODIFIED BRILLIANT Measurements 10.35 X 7.04 X 4.61 MM

GRADING RESULTS

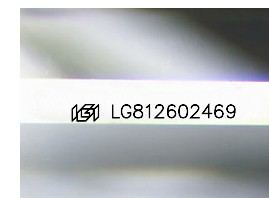
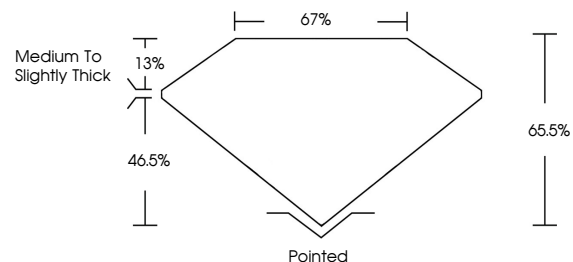
Carat Weight 3.02 CARATS Color Grade E Clarity Grade VS 2

ADDITIONAL GRADING INFORMATION

Polish EXCELLENT Symmetry EXCELLENT Fluorescence NONE Inscription(s) LG812602469

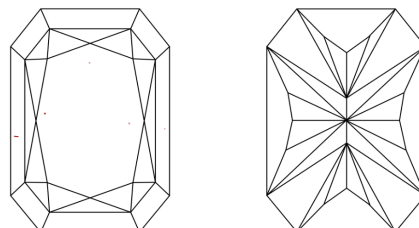
Comments: This Laboratory Grown Diamond was created by Chemical Vapor Deposition (CVD) growth process. Type IIa

PROPORTIONS



Sample Image Used

CLARITY CHARACTERISTICS



KEY TO SYMBOLS

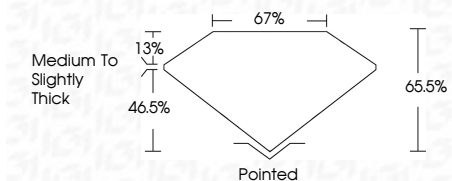
Red symbols indicate internal characteristics. Green symbols indicate external characteristics.

COLOR

D E F G H I J Faint Very Light Light

CLARITY

FL IF VS 1-2 VS 1-2 SI 1-2 I 1-3 Flawless Internally Flawless Very Very Slightly Included Very Slightly Included Slightly Included Included



ADDITIONAL GRADING INFORMATION

Polish EXCELLENT Symmetry EXCELLENT Fluorescence NONE Inscription(s) LG812602469 Comments: This Laboratory Grown Diamond was created by Chemical Vapor Deposition (CVD) growth process. Type IIa



IGI



June 20, 2026 IGI Report No LG812602469 CUT CORNERED RECT. MODIFIED BRILLIANT 3.02 CARATS E VS 2 65.5% 67% Medium to Slightly Thick Pointed EXCELLENT EXCELLENT NONE NONE LG812602469 Comments: This Laboratory Grown Diamond was created by Chemical Vapor Deposition (CVD) growth process. Type IIa