



ELECTRONIC COPY

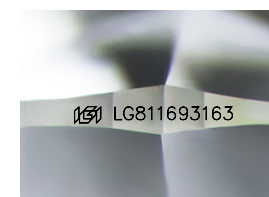
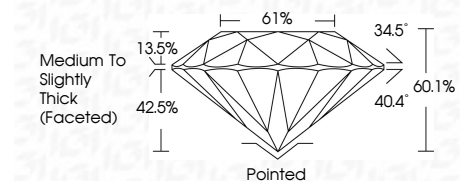
LG811693163
Report verification at igi.org



June 23, 2026
IGI Report Number LG811693163
Description LABORATORY GROWN DIAMOND
Shape and Cutting Style ROUND BRILLIANT
Measurements 8.71 - 8.79 X 5.26 MM

GRADING RESULTS

Carat Weight 2.51 CARATS
Color Grade E
Clarity Grade VS 1
Cut Grade EXCELLENT



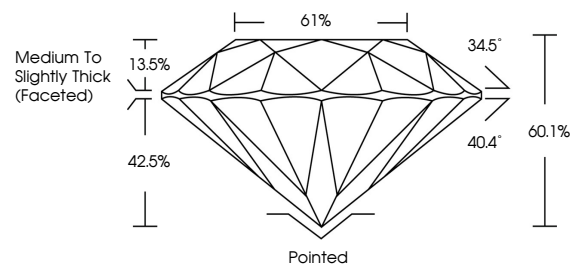
Sample Image Used

ADDITIONAL GRADING INFORMATION

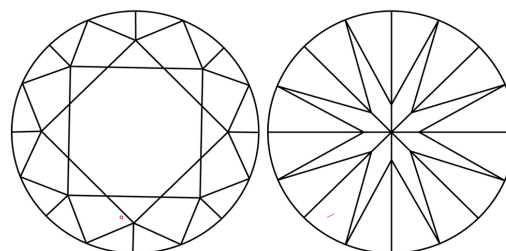
Polish EXCELLENT
Symmetry EXCELLENT
Fluorescence NONE
Inscription(s) IGI LG811693163
Comments: This Laboratory Grown Diamond was created by Chemical Vapor Deposition (CVD) growth process. Type IIa



PROPORTIONS



CLARITY CHARACTERISTICS



KEY TO SYMBOLS

Red symbols indicate internal characteristics.
Green symbols indicate external characteristics.

COLOR

D E F G H I J Faint Very Light Light

CLARITY

FL IF VS 1-2 VS 2-3 SI 1-2 I 1-3
Flawless Internally Flawless Very Very Slightly Included Very Slightly Included Slightly Included Included



June 23, 2026
IGI Report No LG811693163
ROUND BRILLIANT
8.71 - 8.79 X 5.26 MM
Carat Weight 2.51 CARATS
Color Grade E
Clarity Grade VS 1
Cut Grade EXCELLENT
Depth 60.1%
Table 61%
Girdle Medium To Slightly Thick (Faceted)
Culet Pointed
Polish EXCELLENT
Symmetry EXCELLENT
Fluorescence NONE
Inscription(s) IGI LG811693163
Comments: This Laboratory Grown Diamond was created by Chemical Vapor Deposition (CVD) growth process. Type IIa