



June 22, 2026

**IGI Report Number** LG811692391  
**ROUND BRILLIANT**  
**LABORATORY GROWN DIAMOND**  
**5.51 - 5.54 X 3.46 MM**

**0.67 CARAT**  
**D**  
**VVS 1**  
**FAIR**  
**EXCELLENT**  
**EXCELLENT**  
**NONE**  
**Inscription(s)** IGI LG811692391

Comments: This Laboratory Grown Diamond was created by Chemical Vapor Deposition (CVD) growth process. Type IIa

**LABORATORY GROWN DIAMOND REPORT**

June 22, 2026  
IGI Report Number **LG811692391**  
Description **LABORATORY GROWN DIAMOND**  
Shape and Cutting Style **ROUND BRILLIANT**  
Measurements **5.51 - 5.54 X 3.46 MM**

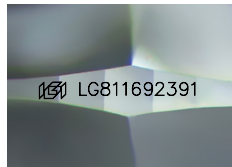
**GRADING RESULTS**

Carat Weight **0.67 CARAT**  
Color Grade **D**  
Clarity Grade **VVS 1**  
Cut Grade **FAIR**

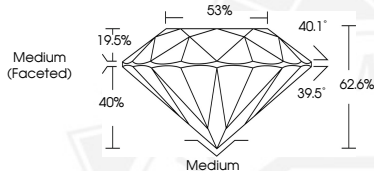
**ADDITIONAL GRADING INFORMATION**

Polish **EXCELLENT**  
Symmetry **EXCELLENT**  
Fluorescence **NONE**  
Inscription(s) **IGI LG811692391**

Comments: This Laboratory Grown Diamond was created by Chemical Vapor Deposition (CVD) growth process. Type IIa



Sample Image Used



June 22, 2026

**IGI Report Number** LG811692391  
**ROUND BRILLIANT**  
**LABORATORY GROWN DIAMOND**  
**5.51 - 5.54 X 3.46 MM**

**0.67 CARAT**  
**D**  
**VVS 1**  
**FAIR**  
**EXCELLENT**  
**EXCELLENT**  
**NONE**  
**Inscription(s)** IGI LG811692391

Comments: This Laboratory Grown Diamond was created by Chemical Vapor Deposition (CVD) growth process. Type IIa



THIS DOCUMENT WAS PRODUCED WITH THE FOLLOWING SECURITY MEASURES: SPECIAL DOCUMENT PAPER, INK SCREENS, WATERMARK, BACKGROUND DESIGNS, HOLOGRAM AND OTHER SECURITY FEATURES NOT LISTED AND DO EXCEED DOCUMENT SECURITY INDUSTRY GUIDELINES.