



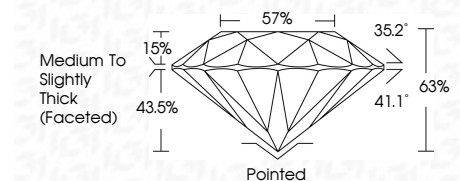
ELECTRONIC COPY

LG811691377 Report verification at igi.org



June 19, 2026 IGI Report Number LG811691377 Description LABORATORY GROWN DIAMOND Shape and Cutting Style ROUND BRILLIANT Measurements 10.47 - 10.52 X 6.61 MM

GRADING RESULTS Carat Weight 4.52 CARATS Color Grade E Clarity Grade VS 1 Cut Grade EXCELLENT



ADDITIONAL GRADING INFORMATION Polish EXCELLENT Symmetry EXCELLENT Fluorescence NONE Inscription(s) IGI LG811691377 Comments: This Laboratory Grown Diamond was created by Chemical Vapor Deposition (CVD) growth process. Type IIa



June 19, 2026 IGI Report No LG811691377 ROUND BRILLIANT 10.47 - 10.52 X 6.61 MM 4.52 CARATS E VS 1 EXCELLENT 63% 57% Medium To Slightly Thick (Faceted) Pointed EXCELLENT EXCELLENT NONE NONE IGI LG811691377 Comments: This Laboratory Grown Diamond was created by Chemical Vapor Deposition (CVD) growth process. Type IIa

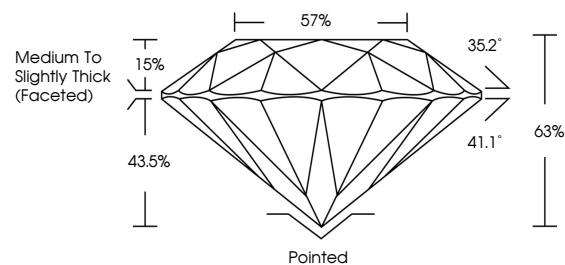
June 19, 2026 IGI Report Number LG811691377 Description LABORATORY GROWN DIAMOND Shape and Cutting Style ROUND BRILLIANT Measurements 10.47 - 10.52 X 6.61 MM

GRADING RESULTS Carat Weight 4.52 CARATS Color Grade E Clarity Grade VS 1 Cut Grade EXCELLENT

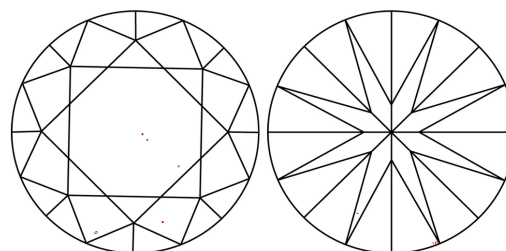
ADDITIONAL GRADING INFORMATION Polish EXCELLENT Symmetry EXCELLENT Fluorescence NONE Inscription(s) IGI LG811691377

Comments: This Laboratory Grown Diamond was created by Chemical Vapor Deposition (CVD) growth process. Type IIa

PROPORTIONS

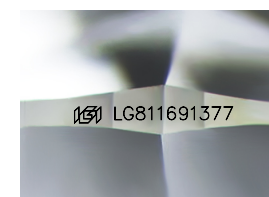


CLARITY CHARACTERISTICS



KEY TO SYMBOLS

Red symbols indicate internal characteristics. Green symbols indicate external characteristics.



Sample Image Used

COLOR

D E F G H I J Faint Very Light Light

CLARITY

FL IF VS 1-2 VS 1-2 SI 1-2 I 1-3 Flawless Internally Flawless Very Very Slightly Included Very Slightly Included Slightly Included Included

