



**ELECTRONIC COPY**

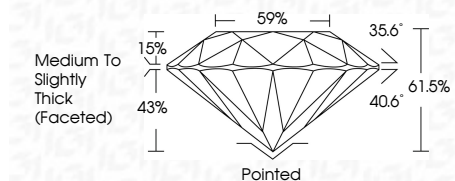
LG811691025  
Report verification at igi.org



June 19, 2026  
IGI Report Number **LG811691025**  
Description **LABORATORY GROWN DIAMOND**  
Shape and Cutting Style **ROUND BRILLIANT**  
Measurements **7.74 - 7.79 X 4.77 MM**

**GRADING RESULTS**

Carat Weight **1.79 CARAT**  
Color Grade **D**  
Clarity Grade **VVS 1**  
Cut Grade **IDEAL**

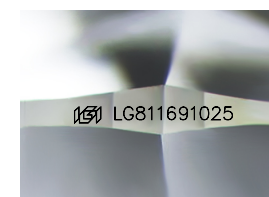


**ADDITIONAL GRADING INFORMATION**

Polish **EXCELLENT**  
Symmetry **EXCELLENT**  
Fluorescence **NONE**  
Inscription(s) **IGI LG811691025**  
Comments: This Laboratory Grown Diamond was created by Chemical Vapor Deposition (CVD) growth process. Type IIa

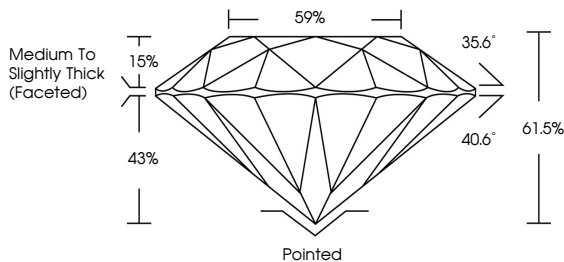


|               |                           |                 |            |       |       |        |       |        |                                    |              |                |   |      |                 |
|---------------|---------------------------|-----------------|------------|-------|-------|--------|-------|--------|------------------------------------|--------------|----------------|---|------|-----------------|
| June 19, 2026 | IGI Report No LG811691025 | ROUND BRILLIANT | 1.79 CARAT | D     | VVS 1 | IDEAL  | 61.5% | 59%    | Medium To Slightly Thick (Faceted) | Pointed      | EXCELLENT      | EXCELLENT   | NONE | IGI LG811691025 |
| Carat Weight  | Color Grade               | Clarity Grade   | Cut Grade  | Depth | Table | Girdle | Culet | Polish | Symmetry                           | Fluorescence | Inscription(s) | Comments: This Laboratory Grown Diamond was created by Chemical Vapor Deposition (CVD) growth process. Type IIa |      |                 |

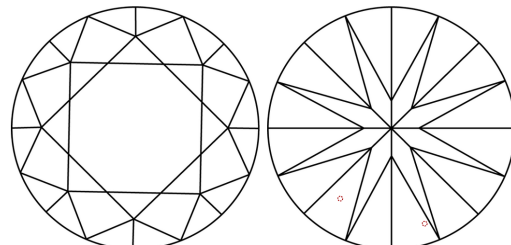


Sample Image Used

**PROPORTIONS**



**CLARITY CHARACTERISTICS**



**KEY TO SYMBOLS**

Red symbols indicate internal characteristics.  
Green symbols indicate external characteristics.

**COLOR**

|   |   |   |   |   |   |   |       |            |       |
|---|---|---|---|---|---|---|-------|------------|-------|
| D | E | F | G | H | I | J | Faint | Very Light | Light |
|---|---|---|---|---|---|---|-------|------------|-------|

**CLARITY**

|          |                     |                             |                        |                   |                  |
|----------|---------------------|-----------------------------|------------------------|-------------------|------------------|
| FL       | IF                  | VVS <sup>1-2</sup>          | VS <sup>1-2</sup>      | SI <sup>1-2</sup> | I <sup>1-3</sup> |
| Flawless | Internally Flawless | Very Very Slightly Included | Very Slightly Included | Slightly Included | Included         |

