



ELECTRONIC COPY

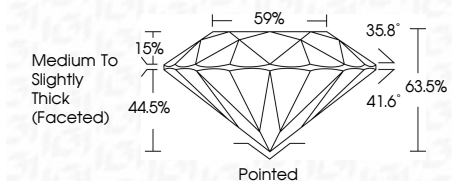
LG811690370 Report verification at igi.org



June 23, 2026 IGI Report Number LG811690370 Description LABORATORY GROWN DIAMOND Shape and Cutting Style ROUND BRILLIANT Measurements 7.31 - 7.34 X 4.65 MM

GRADING RESULTS

Carat Weight 1.55 CARAT Color Grade E Clarity Grade VS 1 Cut Grade EXCELLENT



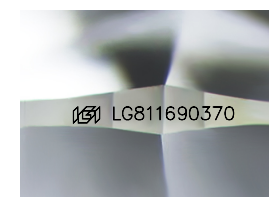
ADDITIONAL GRADING INFORMATION

Polish EXCELLENT Symmetry EXCELLENT Fluorescence NONE Inscription(s) LG811690370 Comments: This Laboratory Grown Diamond was created by Chemical Vapor Deposition (CVD) growth process. Type IIa



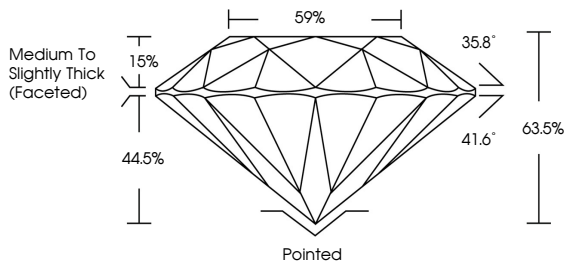
June 23, 2026 IGI Report No LG811690370 ROUND BRILLIANT 1.55 CARAT E VS 1 EXCELLENT 63.5% 59% Medium To Slightly Thick (Faceted) Pointed EXCELLENT EXCELLENT NONE LG811690370

Comments: This Laboratory Grown Diamond was created by Chemical Vapor Deposition (CVD) growth process. Type IIa

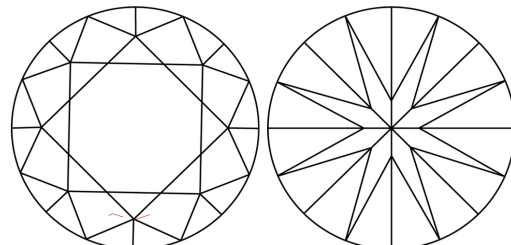


Sample Image Used

PROPORTIONS



CLARITY CHARACTERISTICS



KEY TO SYMBOLS

Red symbols indicate internal characteristics. Green symbols indicate external characteristics.

COLOR

Table with color scale: D, E, F, G, H, I, J, Faint, Very Light, Light

CLARITY

Table with clarity scale: FL, IF, VS 1-2, VS 1-2, SI 1-2, I 1-3, Flawless, Internally Flawless, Very Very Slightly Included, Very Slightly Included, Slightly Included, Included

