



ELECTRONIC COPY

LG811690332 Report verification at igi.org



June 22, 2026 IGI Report Number LG811690332 Description LABORATORY GROWN DIAMOND Shape and Cutting Style ROUND BRILLIANT Measurements 7.38 - 7.41 X 4.55 MM GRADING RESULTS Carat Weight 1.56 CARAT Color Grade D Clarity Grade VVS 1 Cut Grade EXCELLENT

June 22, 2026 IGI Report Number LG811690332 Description LABORATORY GROWN DIAMOND Shape and Cutting Style ROUND BRILLIANT Measurements 7.38 - 7.41 X 4.55 MM

GRADING RESULTS

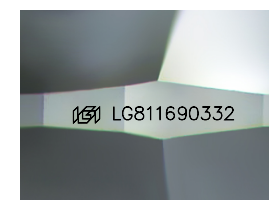
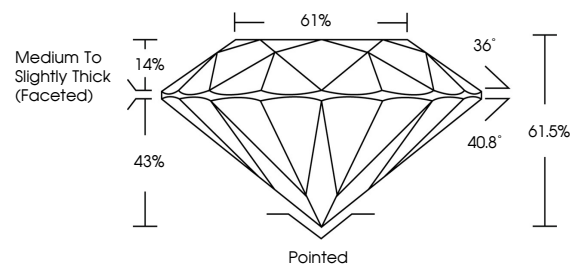
Carat Weight 1.56 CARAT Color Grade D Clarity Grade VVS 1 Cut Grade EXCELLENT

ADDITIONAL GRADING INFORMATION

Polish EXCELLENT Symmetry EXCELLENT Fluorescence NONE Inscription(s) IGI LG811690332

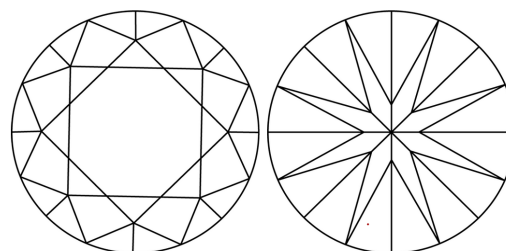
Comments: This Laboratory Grown Diamond was created by Chemical Vapor Deposition (CVD) growth process. Type IIa

PROPORTIONS



Sample Image Used

CLARITY CHARACTERISTICS



KEY TO SYMBOLS

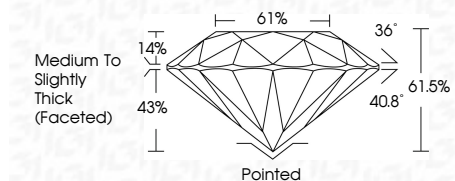
Red symbols indicate internal characteristics. Green symbols indicate external characteristics.

COLOR

D E F G H I J Faint Very Light Light

CLARITY

FL IF VVS 1-2 VS 1-2 SI 1-2 I 1-3 Flawless Internally Flawless Very Very Slightly Included Very Slightly Included Slightly Included Included



ADDITIONAL GRADING INFORMATION

Polish EXCELLENT Symmetry EXCELLENT Fluorescence NONE Inscription(s) IGI LG811690332 Comments: This Laboratory Grown Diamond was created by Chemical Vapor Deposition (CVD) growth process. Type IIa



June 22, 2026 IGI Report No LG811690332 ROUND BRILLIANT 7.38 - 7.41 X 4.55 MM 1.56 CARAT D EXCELLENT VVS 1 EXCELLENT 61.5% 61% Medium To Slightly Thick (Faceted) Pointed EXCELLENT EXCELLENT NONE NONE IGI LG811690332 Comments: This Laboratory Grown Diamond was created by Chemical Vapor Deposition (CVD) growth process. Type IIa