



ELECTRONIC COPY

LG811690320 Report verification at igi.org



June 23, 2026 IGI Report Number LG811690320 Description LABORATORY GROWN DIAMOND Shape and Cutting Style ROUND BRILLIANT Measurements 6.45 - 6.49 X 4.05 MM GRADING RESULTS Carat Weight 1.04 CARAT Color Grade G Clarity Grade VVS 2 Cut Grade EXCELLENT

June 23, 2026 IGI Report Number LG811690320 Description LABORATORY GROWN DIAMOND Shape and Cutting Style ROUND BRILLIANT Measurements 6.45 - 6.49 X 4.05 MM

GRADING RESULTS

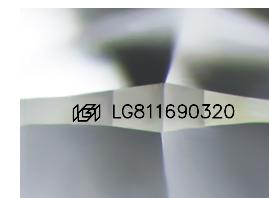
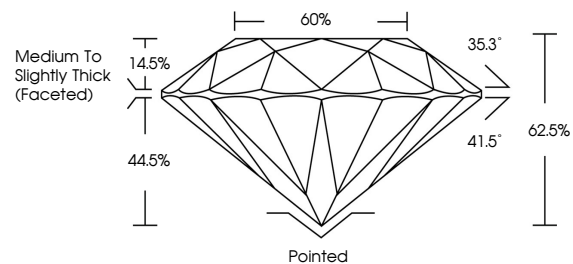
Carat Weight 1.04 CARAT Color Grade G Clarity Grade VVS 2 Cut Grade EXCELLENT

ADDITIONAL GRADING INFORMATION

Polish EXCELLENT Symmetry EXCELLENT Fluorescence NONE Inscription(s) IGI LG811690320

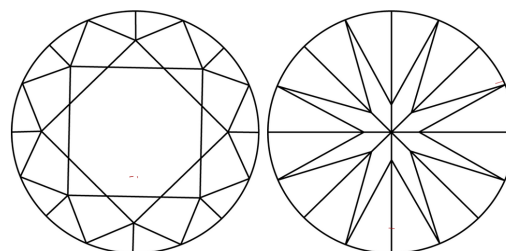
Comments: This Laboratory Grown Diamond was created by Chemical Vapor Deposition (CVD) growth process. Type IIa

PROPORTIONS



Sample Image Used

CLARITY CHARACTERISTICS



KEY TO SYMBOLS

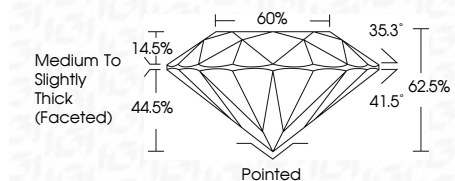
Red symbols indicate internal characteristics. Green symbols indicate external characteristics.

COLOR

D E F G H I J Faint Very Light Light

CLARITY

FL IF VVS 1-2 VS 1-2 SI 1-2 I 1-3 Flawless Internally Flawless Very Very Slightly Included Very Slightly Included Slightly Included Included



ADDITIONAL GRADING INFORMATION

Polish EXCELLENT Symmetry EXCELLENT Fluorescence NONE Inscription(s) IGI LG811690320 Comments: This Laboratory Grown Diamond was created by Chemical Vapor Deposition (CVD) growth process. Type IIa



Summary of report details: June 23, 2026, IGI Report No LG811690320, ROUND BRILLIANT, 6.45 - 6.49 X 4.05 MM, 1.04 CARAT, G, VVS 2, EXCELLENT, 62.5%, 60%, Medium To Slightly Thick (Faceted), Pointed, EXCELLENT, EXCELLENT, NONE, IGI LG811690320. Comments: This Laboratory Grown Diamond was created by Chemical Vapor Deposition (CVD) growth process. Type IIa