



ELECTRONIC COPY

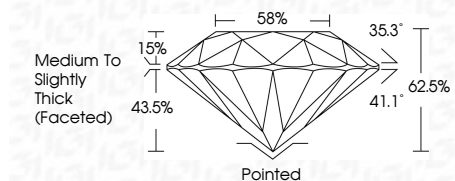
LG811690047 Report verification at igi.org



June 20, 2026 IGI Report Number LG811690047 Description LABORATORY GROWN DIAMOND Shape and Cutting Style ROUND BRILLIANT Measurements 6.48 - 6.50 X 4.06 MM

GRADING RESULTS

Carat Weight 1.05 CARAT Color Grade G Clarity Grade VVS 2 Cut Grade IDEAL



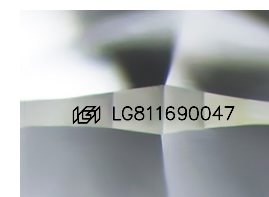
ADDITIONAL GRADING INFORMATION

Polish EXCELLENT Symmetry EXCELLENT Fluorescence NONE Inscription(s) LG811690047 Comments: This Laboratory Grown Diamond was created by Chemical Vapor Deposition (CVD) growth process. Type IIa



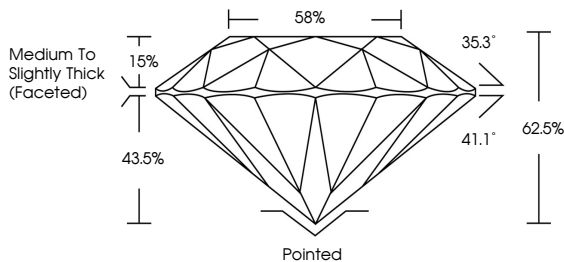
June 20, 2026 IGI Report No LG811690047 ROUND BRILLIANT 6.48 - 6.50 X 4.06 MM 1.05 CARAT G VVS 2 IDEAL 62.5% 58% Medium To Slightly Thick (Faceted) Pointed EXCELLENT EXCELLENT NONE LG811690047

Comments: This Laboratory Grown Diamond was created by Chemical Vapor Deposition (CVD) growth process. Type IIa

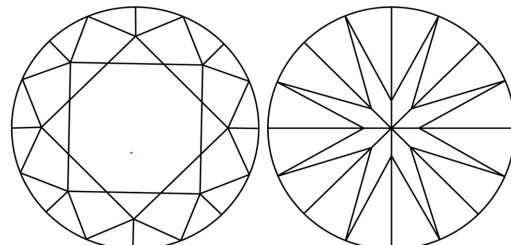


Sample Image Used

PROPORTIONS



CLARITY CHARACTERISTICS



KEY TO SYMBOLS

Red symbols indicate internal characteristics. Green symbols indicate external characteristics.

COLOR

Color scale table with categories D, E, F, G, H, I, J, Faint, Very Light, Light

CLARITY

Clarity scale table with categories FL, IF, VVS 1-2, VS 1-2, SI 1-2, I 1-3, Flawless, Internally Flawless, Very Very Slightly Included, Very Slightly Included, Slightly Included, Included

