



ELECTRONIC COPY

LG811689868 Report verification at igi.org



June 22, 2026 IGI Report Number LG811689868 Description LABORATORY GROWN DIAMOND Shape and Cutting Style ROUND BRILLIANT Measurements 6.58 - 6.61 X 4.03 MM GRADING RESULTS Carat Weight 1.06 CARAT Color Grade D Clarity Grade VS 1 Cut Grade EXCELLENT

June 22, 2026 IGI Report Number LG811689868 Description LABORATORY GROWN DIAMOND Shape and Cutting Style ROUND BRILLIANT Measurements 6.58 - 6.61 X 4.03 MM

GRADING RESULTS

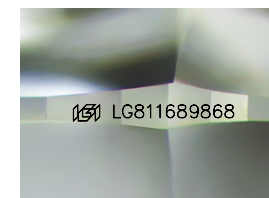
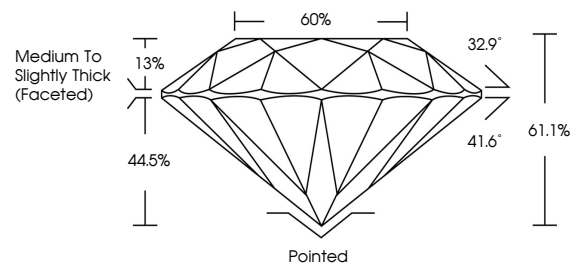
Carat Weight 1.06 CARAT Color Grade D Clarity Grade VS 1 Cut Grade EXCELLENT

ADDITIONAL GRADING INFORMATION

Polish EXCELLENT Symmetry EXCELLENT Fluorescence NONE Inscription(s) LG811689868

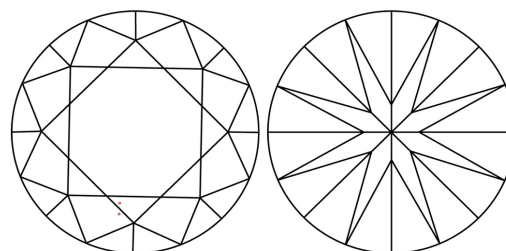
Comments: This Laboratory Grown Diamond was created by Chemical Vapor Deposition (CVD) growth process. Type IIa

PROPORTIONS



Sample Image Used

CLARITY CHARACTERISTICS



KEY TO SYMBOLS

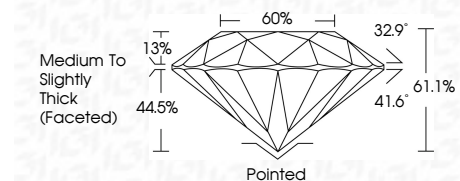
Red symbols indicate internal characteristics. Green symbols indicate external characteristics.

COLOR

D E F G H I J Faint Very Light Light

CLARITY

FL IF VS 1-2 VS 2-3 SI 1-2 I 1-3 Flawless Internally Flawless Very Very Slightly Included Very Slightly Included Slightly Included Included



ADDITIONAL GRADING INFORMATION

Polish EXCELLENT Symmetry EXCELLENT Fluorescence NONE Inscription(s) LG811689868 Comments: This Laboratory Grown Diamond was created by Chemical Vapor Deposition (CVD) growth process. Type IIa



June 22, 2026 IGI Report No LG811689868 ROUND BRILLIANT 6.58 - 6.61 X 4.03 MM 1.06 CARAT D VS 1 EXCELLENT 61.1% 60% Medium To Slightly Thick (Faceted) Pointed EXCELLENT EXCELLENT NONE NONE LG811689868 Comments: This Laboratory Grown Diamond was created by Chemical Vapor Deposition (CVD) growth process. Type IIa