



ELECTRONIC COPY

LG811689798 Report verification at igi.org



June 22, 2026 IGI Report Number LG811689798 Description LABORATORY GROWN DIAMOND Shape and Cutting Style ROUND BRILLIANT Measurements 6.49 - 6.52 X 3.93 MM GRADING RESULTS Carat Weight 1.01 CARAT Color Grade F Clarity Grade VVS 2 Cut Grade EXCELLENT

June 22, 2026 IGI Report Number LG811689798 Description LABORATORY GROWN DIAMOND Shape and Cutting Style ROUND BRILLIANT Measurements 6.49 - 6.52 X 3.93 MM

GRADING RESULTS

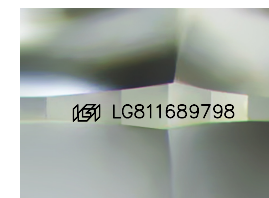
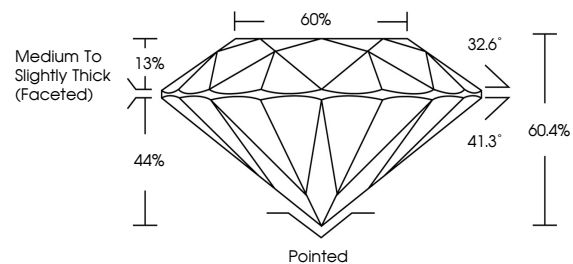
Carat Weight 1.01 CARAT Color Grade F Clarity Grade VVS 2 Cut Grade EXCELLENT

ADDITIONAL GRADING INFORMATION

Polish EXCELLENT Symmetry EXCELLENT Fluorescence NONE Inscription(s) IGI LG811689798

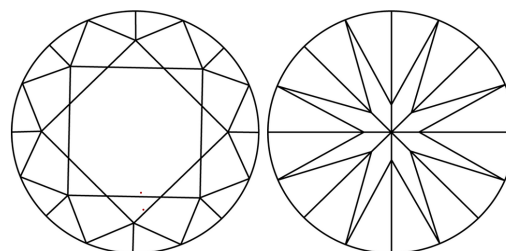
Comments: This Laboratory Grown Diamond was created by Chemical Vapor Deposition (CVD) growth process. Type IIa

PROPORTIONS



Sample Image Used

CLARITY CHARACTERISTICS



KEY TO SYMBOLS

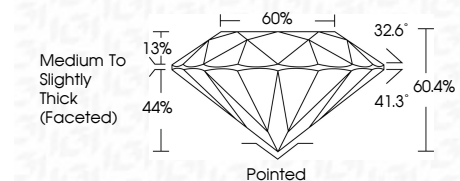
Red symbols indicate internal characteristics. Green symbols indicate external characteristics.

COLOR

D E F G H I J Faint Very Light Light

CLARITY

FL IF VVS 1-2 VS 1-2 SI 1-2 I 1-3 Flawless Internally Flawless Very Very Slightly Included Very Slightly Included Slightly Included Included



ADDITIONAL GRADING INFORMATION

Polish EXCELLENT Symmetry EXCELLENT Fluorescence NONE Inscription(s) IGI LG811689798 Comments: This Laboratory Grown Diamond was created by Chemical Vapor Deposition (CVD) growth process. Type IIa



IGI



June 22, 2026 IGI Report No LG811689798 ROUND BRILLIANT 6.49 - 6.52 X 3.93 MM 1.01 CARAT F VVS 2 EXCELLENT 60.4% 60% Medium To Slightly Thick (Faceted) Pointed EXCELLENT EXCELLENT NONE NONE IGI LG811689798 Comments: This Laboratory Grown Diamond was created by Chemical Vapor Deposition (CVD) growth process. Type IIa