



**ELECTRONIC COPY**

LG811681516  
Report verification at igi.org



June 19, 2026

IGI Report Number **LG811681516**

Description **LABORATORY GROWN DIAMOND**

Shape and Cutting Style **PEAR BRILLIANT**

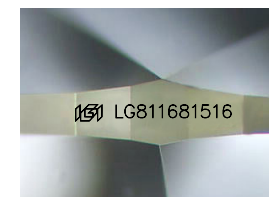
Measurements **8.54 X 5.53 X 3.56 MM**

**GRADING RESULTS**

Carat Weight **1.00 CARAT**

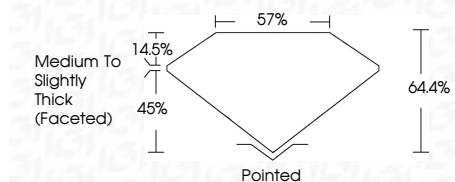
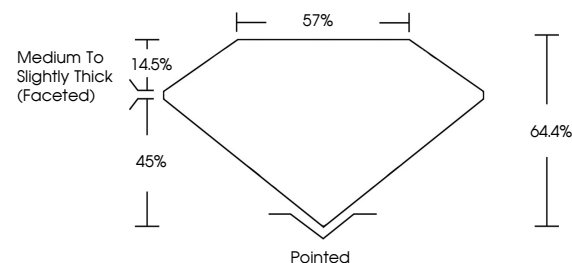
Color Grade **E**

Clarity Grade **VS 1**

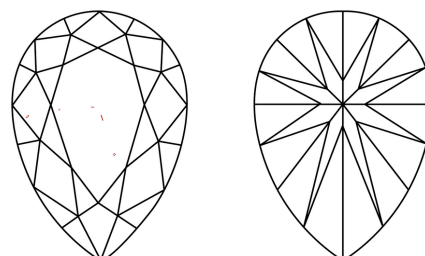


Sample Image Used

**PROPORTIONS**



**CLARITY CHARACTERISTICS**



**KEY TO SYMBOLS**

Red symbols indicate internal characteristics.  
Green symbols indicate external characteristics.

**COLOR**

D E F G H I J Faint Very Light Light

**CLARITY**

FL	IF	VS <sup>1-2</sup>	VS <sup>1-2</sup>	SI <sup>1-2</sup>	I <sup>1-3</sup>
Flawless	Internally Flawless	Very Very Slightly Included	Very Slightly Included	Slightly Included	Included

**ADDITIONAL GRADING INFORMATION**

Polish **EXCELLENT**

Symmetry **EXCELLENT**

Fluorescence **NONE**

Inscription(s) **IGI LG811681516**

Comments: This Laboratory Grown Diamond was created by Chemical Vapor Deposition (CVD) growth process.  
Type IIa



June 19, 2026	IGI Report No LG811681516	1.00 CARAT	E	VS 1	64.4%	57%	Medium to Slightly Thick (Faceted)	Pointed
PEAR BRILLIANT	8.54 X 5.53 X 3.56 MM	Color Grade	EXCELLENT	Symmetry	EXCELLENT	Fluorescence	NONE	Inscription(s)
								IGI LG811681516

Comments: This Laboratory Grown Diamond was created by Chemical Vapor Deposition (CVD) growth process.  
Type IIa