



**ELECTRONIC COPY**

LG811675433  
Report verification at igi.org

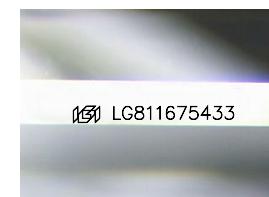


June 19, 2026  
IGI Report Number **LG811675433**  
Description **LABORATORY GROWN DIAMOND**  
Shape and Cutting Style **CUT CORNERED  
RECTANGULAR MODIFIED  
BRILLIANT**

Measurements **11.03 X 7.91 X 5.34 MM**

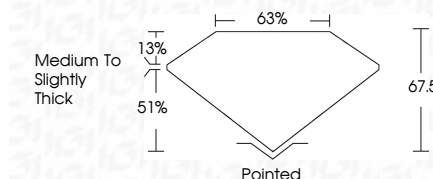
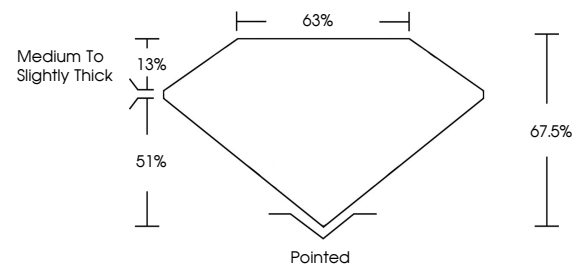
**GRADING RESULTS**

Carat Weight **3.91 CARATS**  
Color Grade **E**  
Clarity Grade **VVS 2**



Sample Image Used

**PROPORTIONS**



**ADDITIONAL GRADING INFORMATION**

Polish **EXCELLENT**  
Symmetry **EXCELLENT**  
Fluorescence **NONE**

Inscription(s) **IGI LG811675433**  
Comments: This Laboratory Grown Diamond was created by Chemical Vapor Deposition (CVD) growth process. Type IIa



**COLOR**

D E F G H I J Faint Very Light Light

**CLARITY**

FL	IF	VVS <sup>1-2</sup>	VS <sup>1-2</sup>	SI <sup>1-2</sup>	I <sup>1-3</sup>
Flawless	Internally Flawless	Very Very Slightly Included	Very Slightly Included	Slightly Included	Included



June 19, 2026  
IGI Report No LG811675433  
CUT CORNERED RECT. MODIFIED BRILLIANT  
11.03 X 7.91 X 5.34 MM  
Carat Weight **3.91 CARATS**  
Color Grade **E**  
Clarity Grade **VVS 2**  
Table **67.0%**  
Girdle **65%**  
Medium to Slightly Thick  
Culet **Pointed**  
Polish **EXCELLENT**  
Symmetry **EXCELLENT**  
Fluorescence **NONE**  
Inscription(s) **IGI LG811675433**  
Comments: This Laboratory Grown Diamond was created by Chemical Vapor Deposition (CVD) growth process. Type IIa