



**ELECTRONIC COPY**

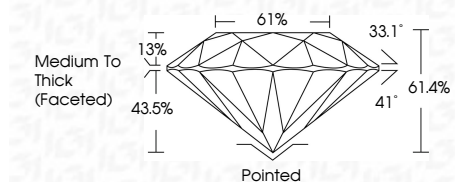
LG811674151  
Report verification at igi.org



June 19, 2026  
IGI Report Number **LG811674151**  
Description **LABORATORY GROWN DIAMOND**  
Shape and Cutting Style **ROUND BRILLIANT**  
Measurements **6.36 - 6.43 X 3.93 MM**

**GRADING RESULTS**

Carat Weight **1.00 CARAT**  
Color Grade **E**  
Clarity Grade **VS 1**  
Cut Grade **VERY GOOD**

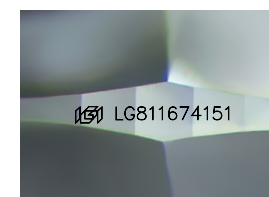


**ADDITIONAL GRADING INFORMATION**

Polish **EXCELLENT**  
Symmetry **VERY GOOD**  
Fluorescence **NONE**  
Inscription(s) **IGI LG811674151**  
Comments: This Laboratory Grown Diamond was created by Chemical Vapor Deposition (CVD) growth process. Type IIa

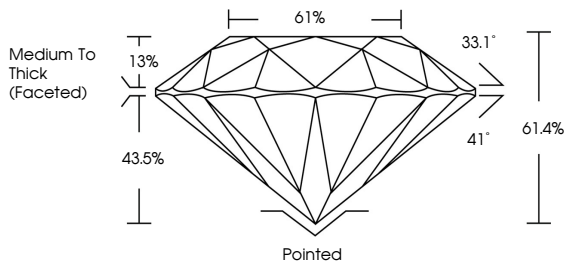


June 19, 2026  
IGI Report No LG811674151  
**ROUND BRILLIANT**  
6.36 - 6.43 X 3.93 MM  
1.00 CARAT  
E  
Color Grade  
VS 1  
Clarity Grade  
VERY GOOD  
61.4%  
61%  
Depth  
61%  
Table  
Medium To Thick (Faceted)  
Culet  
Pointed  
Polish  
EXCELLENT  
Symmetry  
VERY GOOD  
Fluorescence  
NONE  
Inscription(s)  
IGI LG811674151  
Comments: This Laboratory Grown Diamond was created by Chemical Vapor Deposition (CVD) growth process. Type IIa

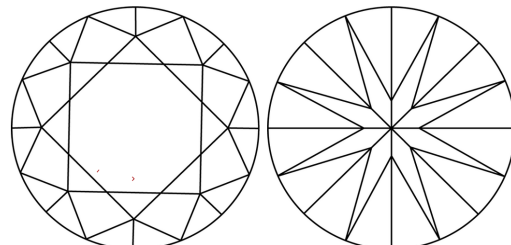


Sample Image Used

**PROPORTIONS**



**CLARITY CHARACTERISTICS**



**KEY TO SYMBOLS**

Red symbols indicate internal characteristics.  
Green symbols indicate external characteristics.

**COLOR**

D E F G H I J Faint Very Light Light

**CLARITY**

FL	IF	VS <sup>1-2</sup>	VS <sup>1-2</sup>	SI <sup>1-2</sup>	I <sup>1-3</sup>
Flawless	Internally Flawless	Very Very Slightly Included	Very Slightly Included	Slightly Included	Included

