



ELECTRONIC COPY

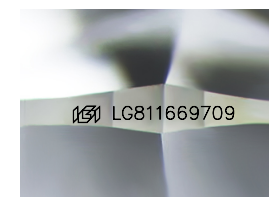
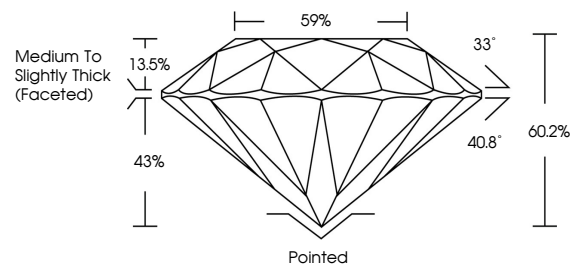
LG811669709 Report verification at igi.org



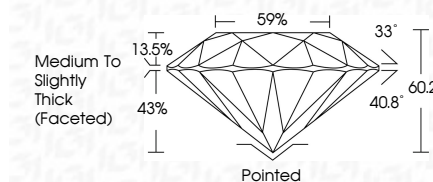
June 22, 2026 IGI Report Number LG811669709 Description LABORATORY GROWN DIAMOND Shape and Cutting Style ROUND BRILLIANT Measurements 10.21 - 10.27 X 6.18 MM GRADING RESULTS Carat Weight 4.01 CARATS Color Grade F Clarity Grade VVS 2 Cut Grade IDEAL

June 22, 2026 IGI Report Number LG811669709 Description LABORATORY GROWN DIAMOND Shape and Cutting Style ROUND BRILLIANT Measurements 10.21 - 10.27 X 6.18 MM GRADING RESULTS Carat Weight 4.01 CARATS Color Grade F Clarity Grade VVS 2 Cut Grade IDEAL

PROPORTIONS



Sample Image Used



ADDITIONAL GRADING INFORMATION Polish EXCELLENT Symmetry EXCELLENT Fluorescence NONE Inscription(s) IGI LG811669709

Comments: This Laboratory Grown Diamond was created by Chemical Vapor Deposition (CVD) growth process. Type IIa

COLOR

D E F G H I J Faint Very Light Light

CLARITY

FL IF VS 1-2 VS 1-2 SI 1-2 I 1-3 Flawless Internally Flawless Very Very Slightly Included Very Slightly Included Slightly Included Included

ADDITIONAL GRADING INFORMATION

Polish EXCELLENT Symmetry EXCELLENT Fluorescence NONE Inscription(s) IGI LG811669709 Comments: This Laboratory Grown Diamond was created by Chemical Vapor Deposition (CVD) growth process. Type IIa



IGI



Summary of report details including date, report number, description, measurements, grading results, and additional information.