



ELECTRONIC COPY

LG811669030
Report verification at igi.org

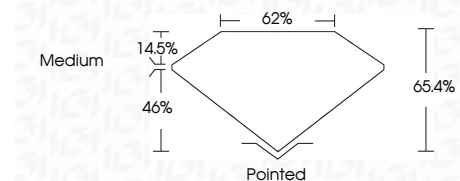


June 19, 2026
IGI Report Number LG811669030
Description LABORATORY GROWN DIAMOND
Shape and Cutting Style CUT CORNERED RECTANGULAR MODIFIED BRILLIANT

Measurements 13.26 X 9.44 X 6.17 MM

GRADING RESULTS

Carat Weight 6.91 CARATS
Color Grade E
Clarity Grade VVS 2



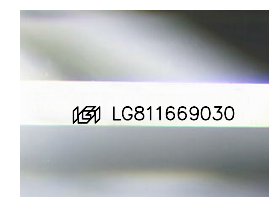
ADDITIONAL GRADING INFORMATION

Polish EXCELLENT
Symmetry EXCELLENT
Fluorescence NONE
Inscription(s) LG811669030

Comments: This Laboratory Grown Diamond was created by Chemical Vapor Deposition (CVD) growth process. Type IIa

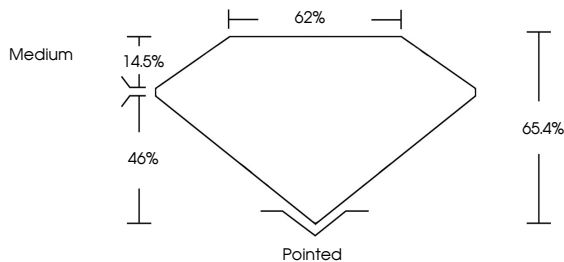


June 19, 2026
IGI Report No LG811669030
CUT CORNERED RECT. MODIFIED BRILLIANT
13.26 X 9.44 X 6.17 MM
6.91 CARATS
E
VVS 2
65.4%
62%
Medium
Pointed
EXCELLENT
EXCELLENT
NONE
LG811669030
Comments: This Laboratory Grown Diamond was created by Chemical Vapor Deposition (CVD) growth process. Type IIa

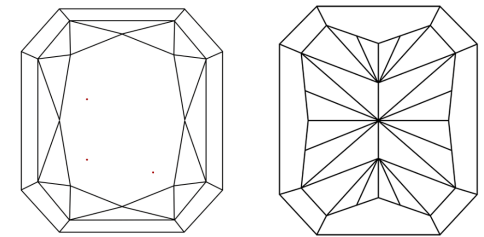


Sample Image Used

PROPORTIONS



CLARITY CHARACTERISTICS



KEY TO SYMBOLS

Red symbols indicate internal characteristics.
Green symbols indicate external characteristics.

COLOR

D E F G H I J Faint Very Light Light

CLARITY

FL IF VVS 1-2 VS 1-2 SI 1-2 I 1-3
Flawless Internally Flawless Very Very Slightly Included Very Slightly Included Slightly Included Included

