



**ELECTRONIC COPY**

LG811666494  
Report verification at igi.org



June 25, 2026  
IGI Report Number **LG811666494**  
Description **LABORATORY GROWN DIAMOND**  
Shape and Cutting Style **HEXAGONAL MODIFIED STEP CUT**

Measurements **22.01 X 11.87 X 7.15 MM**

**GRADING RESULTS**  
Carat Weight **15.05 CARATS**  
Color Grade **FANCY VIVID PINK**  
Clarity Grade **VS 2**

June 25, 2026  
IGI Report Number **LG811666494**  
Description **LABORATORY GROWN DIAMOND**  
Shape and Cutting Style **HEXAGONAL MODIFIED STEP CUT**  
Measurements **22.01 X 11.87 X 7.15 MM**

**GRADING RESULTS**

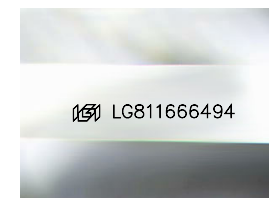
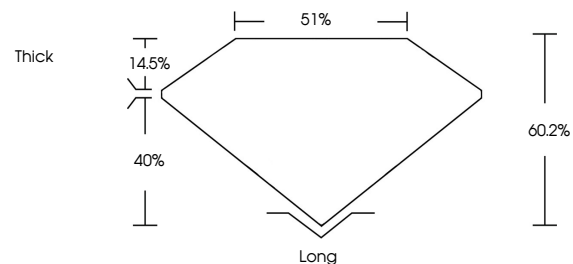
Carat Weight **15.05 CARATS**  
Color Grade **FANCY VIVID PINK**  
Clarity Grade **VS 2**

**ADDITIONAL GRADING INFORMATION**

Polish **EXCELLENT**  
Symmetry **EXCELLENT**  
Fluorescence **STRONG**  
Inscription(s) **LG811666494**

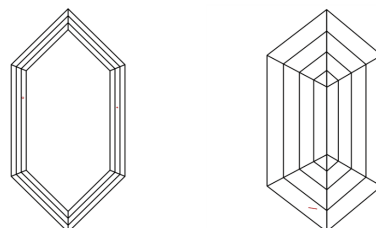
Comments: This Laboratory Grown Diamond was created by Chemical Vapor Deposition (CVD) growth process.  
Indications of post-growth treatment.

**PROPORTIONS**



Sample Image Used

**CLARITY CHARACTERISTICS**



**KEY TO SYMBOLS**

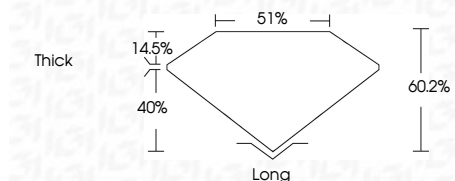
Red symbols indicate internal characteristics.  
Green symbols indicate external characteristics.

**COLOR**

D E F G H I J Faint Very Light Light

**CLARITY**

FL	IF	VS <sup>1-2</sup>	VS <sup>1-2</sup>	SI <sup>1-2</sup>	I <sup>1-3</sup>
Flawless	Internally Flawless	Very Very Slightly Included	Very Slightly Included	Slightly Included	Included



**ADDITIONAL GRADING INFORMATION**

Polish **EXCELLENT**  
Symmetry **EXCELLENT**  
Fluorescence **STRONG**  
Inscription(s) **LG811666494**  
Comments: This Laboratory Grown Diamond was created by Chemical Vapor Deposition (CVD) growth process.  
Indications of post-growth treatment.



June 25, 2026  
IGI Report No LG811666494  
HEXAGONAL MODIFIED STEP CUT  
22.01 X 11.87 X 7.15 MM  
15.05 CARATS  
FANCY VIVID PINK  
VS 2  
60.2%  
51%  
Thick  
Long  
EXCELLENT  
EXCELLENT  
STRONG  
IGI LG811666494  
Comments: This Laboratory Grown Diamond was created by Chemical Vapor Deposition (CVD) growth process.  
Indications of post-growth treatment.