



ELECTRONIC COPY

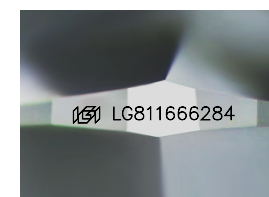
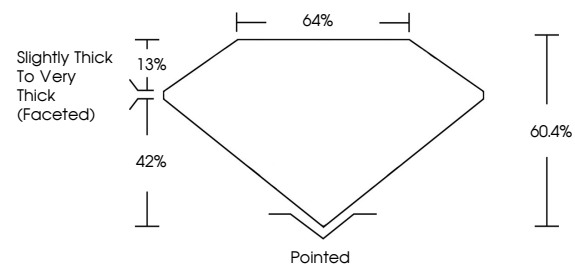
LG811666284
Report verification at igi.org



June 19, 2026
IGI Report Number **LG811666284**
Description **LABORATORY GROWN DIAMOND**
Shape and Cutting Style **SQUARE CUSHION MODIFIED BRILLIANT**
Measurements **7.25 X 6.94 X 4.19 MM**
GRADING RESULTS
Carat Weight **1.84 CARAT**
Color Grade **FANCY BLUE**
Clarity Grade **VS 2**

June 19, 2026
IGI Report Number **LG811666284**
Description **LABORATORY GROWN DIAMOND**
Shape and Cutting Style **SQUARE CUSHION MODIFIED BRILLIANT**
Measurements **7.25 X 6.94 X 4.19 MM**

PROPORTIONS

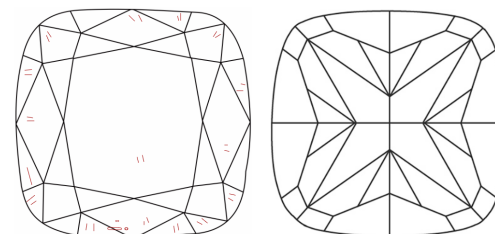


Sample Image Used

GRADING RESULTS

Carat Weight **1.84 CARAT**
Color Grade **FANCY BLUE**
Clarity Grade **VS 2**

CLARITY CHARACTERISTICS



KEY TO SYMBOLS

Red symbols indicate internal characteristics.
Green symbols indicate external characteristics.

ADDITIONAL GRADING INFORMATION

Polish **EXCELLENT**
Symmetry **EXCELLENT**
Fluorescence **NONE**
Inscription(s) **IGI LG811666284**

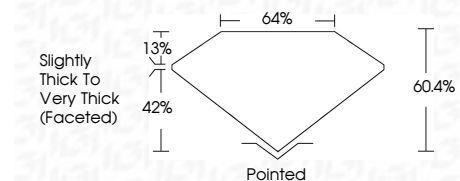
Comments: As Grown - No indication of post-growth treatment.
This Laboratory Grown Diamond was created by High Pressure High Temperature (HPHT) growth process.

COLOR

D E F G H I J Faint Very Light Light

CLARITY

FL	IF	VS ¹⁻²	VS ¹⁻²	SI ¹⁻²	I ¹⁻³
Flawless	Internally Flawless	Very Very Slightly Included	Very Slightly Included	Slightly Included	Included



ADDITIONAL GRADING INFORMATION

Polish **EXCELLENT**
Symmetry **EXCELLENT**
Fluorescence **NONE**
Inscription(s) **IGI LG811666284**
Comments: As Grown - No indication of post-growth treatment.
This Laboratory Grown Diamond was created by High Pressure High Temperature (HPHT) growth process.



June 19, 2026
IGI Report No LG811666284
SQUARE CUSHION MODIFIED BRILLIANT
7.25 X 6.94 X 4.19 MM
1.84 CARAT
FANCY BLUE
VS 2
60.4%
42%
13%
Slightly Thick To Very Thick (Faceted)
Pointed
EXCELLENT
EXCELLENT
NONE
IGI LG811666284
Comments: As Grown - No indication of post-growth treatment.
This Laboratory Grown Diamond was created by High Pressure High Temperature (HPHT) growth process.