



**ELECTRONIC COPY**

LG811664797  
Report verification at igi.org



June 18, 2026  
IGI Report Number **LG811664797**  
Description **LABORATORY GROWN DIAMOND**  
Shape and Cutting Style **ROUND BRILLIANT**  
Measurements **8.01 - 8.06 X 5.06 MM**  
**GRADING RESULTS**  
Carat Weight **2.04 CARATS**  
Color Grade **D**  
Clarity Grade **VS 2**  
Cut Grade **VERY GOOD**

June 18, 2026  
IGI Report Number **LG811664797**  
Description **LABORATORY GROWN DIAMOND**  
Shape and Cutting Style **ROUND BRILLIANT**  
Measurements **8.01 - 8.06 X 5.06 MM**

**GRADING RESULTS**

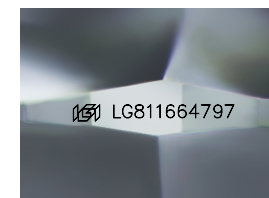
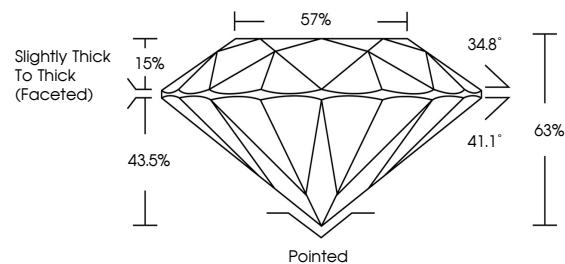
Carat Weight **2.04 CARATS**  
Color Grade **D**  
Clarity Grade **VS 2**  
Cut Grade **VERY GOOD**

**ADDITIONAL GRADING INFORMATION**

Polish **VERY GOOD**  
Symmetry **VERY GOOD**  
Fluorescence **NONE**  
Inscription(s) **IGI LG811664797**

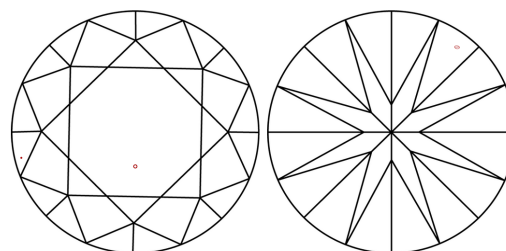
Comments: This Laboratory Grown Diamond was created by Chemical Vapor Deposition (CVD) growth process.  
Type IIa

**PROPORTIONS**



Sample Image Used

**CLARITY CHARACTERISTICS**



**KEY TO SYMBOLS**

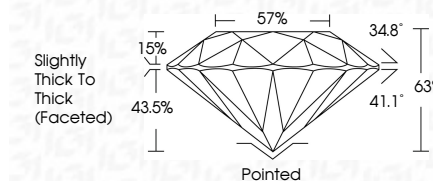
Red symbols indicate internal characteristics.  
Green symbols indicate external characteristics.

**COLOR**

D E F G H I J Faint Very Light Light

**CLARITY**

FL	IF	VS <sup>1-2</sup>	VS <sup>1-2</sup>	SI <sup>1-2</sup>	I <sup>1-3</sup>
Flawless	Internally Flawless	Very Very Slightly Included	Very Slightly Included	Slightly Included	Included



**ADDITIONAL GRADING INFORMATION**

Polish **VERY GOOD**  
Symmetry **VERY GOOD**  
Fluorescence **NONE**  
Inscription(s) **IGI LG811664797**  
Comments: This Laboratory Grown Diamond was created by Chemical Vapor Deposition (CVD) growth process.  
Type IIa



June 18, 2026  
IGI Report No LG811664797  
**ROUND BRILLIANT**  
8.01 - 8.06 X 5.06 MM  
2.04 CARATS  
D  
2.04 CARATS  
D  
VS 2  
VERY GOOD  
85%  
57%  
Slightly Thick To Thick (Faceted)  
Pointed  
VERY GOOD  
VERY GOOD  
NONE  
IGI LG811664797  
Comments: This Laboratory Grown Diamond was created by Chemical Vapor Deposition (CVD) growth process.  
Type IIa