



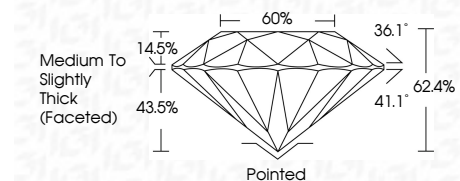
ELECTRONIC COPY

LG811664766
Report verification at igi.org



June 18, 2026
IGI Report Number LG811664766
Description LABORATORY GROWN DIAMOND
Shape and Cutting Style ROUND BRILLIANT
Measurements 7.98 - 8.05 X 5.00 MM

GRADING RESULTS
Carat Weight 2.02 CARATS
Color Grade E
Clarity Grade VVS 2
Cut Grade IDEAL



ADDITIONAL GRADING INFORMATION
Polish VERY GOOD
Symmetry VERY GOOD
Fluorescence NONE
Inscription(s) LG811664766
Comments: This Laboratory Grown Diamond was created by Chemical Vapor Deposition (CVD) growth process. Type IIa



June 18, 2026
IGI Report No LG811664766
ROUND BRILLIANT
7.98 - 8.05 X 5.00 MM
2.02 CARATS
E
VVS 2
IDEAL
62.4%
60%
Medium To Slightly Thick (Faceted)
Pointed
VERY GOOD
VERY GOOD
VERY GOOD
NONE
IGI LG811664766
Comments: This Laboratory Grown Diamond was created by Chemical Vapor Deposition (CVD) growth process. Type IIa

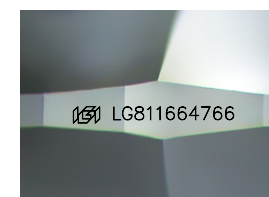
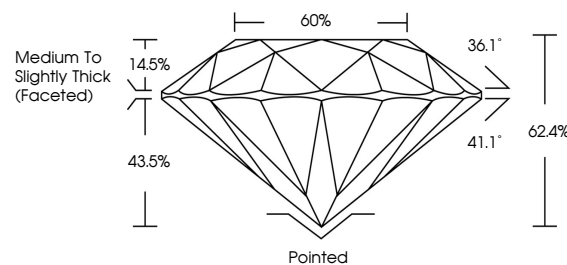
June 18, 2026
IGI Report Number LG811664766
Description LABORATORY GROWN DIAMOND
Shape and Cutting Style ROUND BRILLIANT
Measurements 7.98 - 8.05 X 5.00 MM

GRADING RESULTS
Carat Weight 2.02 CARATS
Color Grade E
Clarity Grade VVS 2
Cut Grade IDEAL

ADDITIONAL GRADING INFORMATION
Polish VERY GOOD
Symmetry VERY GOOD
Fluorescence NONE
Inscription(s) LG811664766

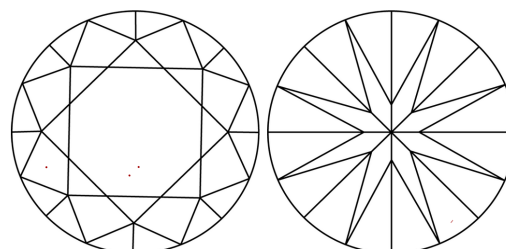
Comments: This Laboratory Grown Diamond was created by Chemical Vapor Deposition (CVD) growth process. Type IIa

PROPORTIONS



Sample Image Used

CLARITY CHARACTERISTICS



KEY TO SYMBOLS

Red symbols indicate internal characteristics.
Green symbols indicate external characteristics.

COLOR

D E F G H I J Faint Very Light Light

CLARITY

FL IF VVS 1-2 VS 1-2 SI 1-2 I 1-3
Flawless Internally Flawless Very Very Slightly Included Very Slightly Included Slightly Included Included

