



ELECTRONIC COPY

LG811659715
Report verification at igi.org



June 19, 2026

IGI Report Number **LG811659715**

Description **LABORATORY GROWN DIAMOND**

Shape and Cutting Style **ROUND BRILLIANT**

Measurements **7.38 - 7.42 X 4.52 MM**

GRADING RESULTS

Carat Weight **1.51 CARAT**

Color Grade **D**

Clarity Grade **VVS 2**

Cut Grade **IDEAL**

June 19, 2026
IGI Report Number **LG811659715**
Description **LABORATORY GROWN DIAMOND**
Shape and Cutting Style **ROUND BRILLIANT**
Measurements **7.38 - 7.42 X 4.52 MM**

GRADING RESULTS

Carat Weight **1.51 CARAT**

Color Grade **D**

Clarity Grade **VVS 2**

Cut Grade **IDEAL**

ADDITIONAL GRADING INFORMATION

Polish **EXCELLENT**

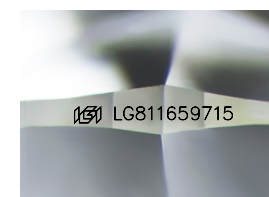
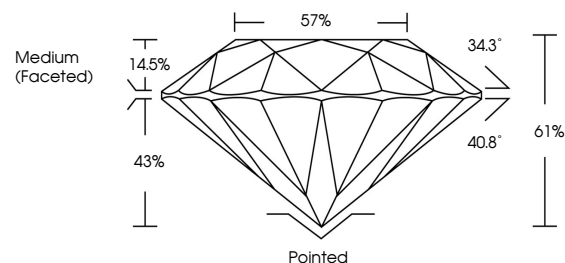
Symmetry **EXCELLENT**

Fluorescence **NONE**

Inscription(s) **IGI LG811659715**

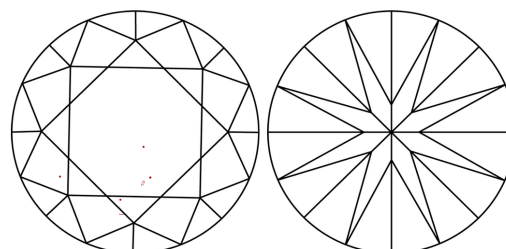
Comments: This Laboratory Grown Diamond was created by Chemical Vapor Deposition (CVD) growth process.
Type IIa

PROPORTIONS



Sample Image Used

CLARITY CHARACTERISTICS



KEY TO SYMBOLS

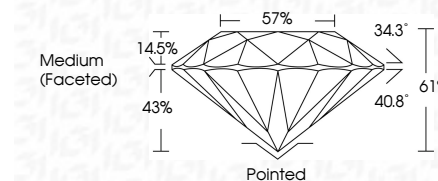
Red symbols indicate internal characteristics.
Green symbols indicate external characteristics.

COLOR

D E F G H I J Faint Very Light Light

CLARITY

FL	IF	VVS ¹⁻²	VS ¹⁻²	SI ¹⁻²	I ¹⁻³
Flawless	Internally Flawless	Very Very Slightly Included	Very Slightly Included	Slightly Included	Included



ADDITIONAL GRADING INFORMATION

Polish **EXCELLENT**

Symmetry **EXCELLENT**

Fluorescence **NONE**

Inscription(s) **IGI LG811659715**

Comments: This Laboratory Grown Diamond was created by Chemical Vapor Deposition (CVD) growth process.
Type IIa



June 19, 2026	IGI Report No LG811659715	1.51 CARAT	D	Pointed	EXCELLENT	EXCELLENT	NONE	IGI LG811659715
ROUND BRILLIANT	7.38 - 7.42 X 4.52 MM	Color Grade	VVS 2	Cut Grade	IDEAL	61%	57%	Medium (Faceted)
		Clarity Grade	IDEAL	Polish	EXCELLENT	Symmetry	EXCELLENT	None
		Depth	61%	Fluorescence	NONE	Inscription(s)	IGI LG811659715	
		Table	57%	Comments: This Laboratory Grown Diamond was created by Chemical Vapor Deposition (CVD) growth process.				Type IIa
		Girdle	Medium (Faceted)					