



**ELECTRONIC COPY**

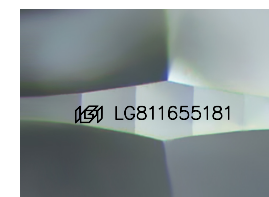
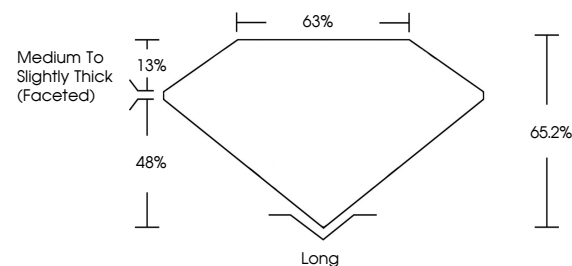
LG811655181  
Report verification at igi.org



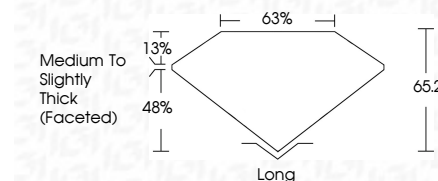
June 19, 2026  
IGI Report Number **LG811655181**  
Description **LABORATORY GROWN DIAMOND**  
Shape and Cutting Style **RECTANGULAR CUSHION  
MIXED CUT**  
Measurements **11.10 X 7.55 X 4.92 MM**  
**GRADING RESULTS**  
Carat Weight **4.13 CARATS**  
Color Grade **E**  
Clarity Grade **VVS 1**

June 19, 2026  
IGI Report Number **LG811655181**  
Description **LABORATORY GROWN DIAMOND**  
Shape and Cutting Style **RECTANGULAR CUSHION  
MIXED CUT**  
Measurements **11.10 X 7.55 X 4.92 MM**  
**GRADING RESULTS**  
Carat Weight **4.13 CARATS**  
Color Grade **E**  
Clarity Grade **VVS 1**

**PROPORTIONS**



Sample Image Used



**ADDITIONAL GRADING INFORMATION**

Polish **EXCELLENT**  
Symmetry **EXCELLENT**  
Fluorescence **NONE**  
Inscription(s) **IGI LG811655181**

Comments: This Laboratory Grown Diamond was created by Chemical Vapor Deposition (CVD) growth process. Type IIa

**ADDITIONAL GRADING INFORMATION**

Polish **EXCELLENT**  
Symmetry **EXCELLENT**  
Fluorescence **NONE**  
Inscription(s) **IGI LG811655181**  
Comments: This Laboratory Grown Diamond was created by Chemical Vapor Deposition (CVD) growth process. Type IIa

**COLOR**

D E F G H I J Faint Very Light Light

**CLARITY**

FL	IF	VVS <sup>1-2</sup>	VS <sup>1-2</sup>	SI <sup>1-2</sup>	I <sup>1-3</sup>
Flawless	Internally Flawless	Very Very Slightly Included	Very Slightly Included	Slightly Included	Included



**IGI**



June 19, 2026  
IGI Report No LG811655181  
**RECTANGULAR CUSHION MIXED CUT**  
11.10 X 7.55 X 4.92 MM  
Carat Weight **4.13 CARATS**  
Color Grade **E**  
Clarity Grade **VVS 1**  
Depth **48%**  
Table **63%**  
Girdle **Medium to Slightly Thick (Faceted)**  
Culet **Long**  
Polish **EXCELLENT**  
Symmetry **EXCELLENT**  
Fluorescence **NONE**  
Inscription(s) **IGI LG811655181**  
Comments: This Laboratory Grown Diamond was created by Chemical Vapor Deposition (CVD) growth process. Type IIa