



**ELECTRONIC COPY**

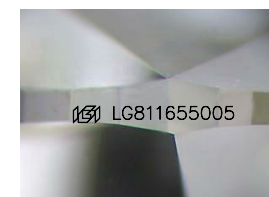
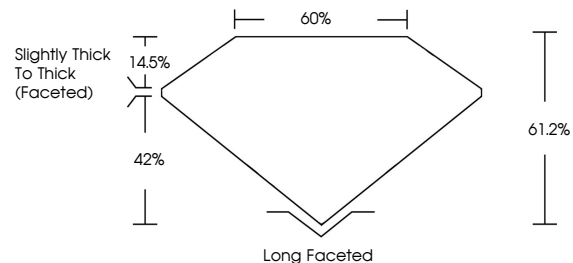
LG811655005  
Report verification at igi.org



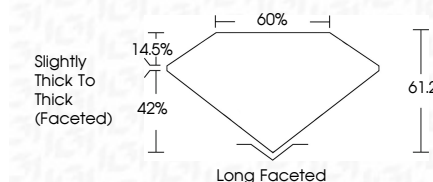
June 22, 2026  
IGI Report Number **LG811655005**  
Description **LABORATORY GROWN DIAMOND**  
Shape and Cutting Style **ANTIQUÉ OVAL CUT**  
Measurements **15.60 X 9.33 X 5.71 MM**  
**GRADING RESULTS**  
Carat Weight **5.50 CARATS**  
Color Grade **E**  
Clarity Grade **VVS 1**

June 22, 2026  
IGI Report Number **LG811655005**  
Description **LABORATORY GROWN DIAMOND**  
Shape and Cutting Style **ANTIQUÉ OVAL CUT**  
Measurements **15.60 X 9.33 X 5.71 MM**  
**GRADING RESULTS**  
Carat Weight **5.50 CARATS**  
Color Grade **E**  
Clarity Grade **VVS 1**

**PROPORTIONS**



Sample Image Used



**ADDITIONAL GRADING INFORMATION**

Polish **EXCELLENT**  
Symmetry **EXCELLENT**  
Fluorescence **NONE**  
Inscription(s) **IGI LG811655005**

Comments: This Laboratory Grown Diamond was created by Chemical Vapor Deposition (CVD) growth process.  
Type IIa

**ADDITIONAL GRADING INFORMATION**

Polish **EXCELLENT**  
Symmetry **EXCELLENT**  
Fluorescence **NONE**  
Inscription(s) **IGI LG811655005**  
Comments: This Laboratory Grown Diamond was created by Chemical Vapor Deposition (CVD) growth process.  
Type IIa

**COLOR**

D E F G H I J Faint Very Light Light

**CLARITY**

FL	IF	VVS <sup>1-2</sup>	VS <sup>1-2</sup>	SI <sup>1-2</sup>	I <sup>1-3</sup>
Flawless	Internally Flawless	Very Very Slightly Included	Very Slightly Included	Slightly Included	Included



**IGI**



June 22, 2026  
IGI Report No LG811655005  
**ANTIQUÉ OVAL CUT**  
15.60 X 9.33 X 5.71 MM  
5.50 CARATS  
E  
VVS 1  
61.2%  
42%  
Slightly Thick To Thick (Faceted)  
Long Faceted  
EXCELLENT  
EXCELLENT  
NONE  
IGI LG811655005  
Comments: This Laboratory Grown Diamond was created by Chemical Vapor Deposition (CVD) growth process.  
Type IIa