



ELECTRONIC COPY

LG811654418
Report verification at igi.org



June 16, 2026
IGI Report Number LG811654418
Description LABORATORY GROWN DIAMOND
Shape and Cutting Style ROUND BRILLIANT
Measurements 6.55 - 6.58 X 4.00 MM
GRADING RESULTS
Carat Weight 1.07 CARAT
Color Grade D
Clarity Grade VVS 1
Cut Grade EXCELLENT

June 16, 2026
IGI Report Number LG811654418
Description LABORATORY GROWN DIAMOND
Shape and Cutting Style ROUND BRILLIANT
Measurements 6.55 - 6.58 X 4.00 MM

GRADING RESULTS

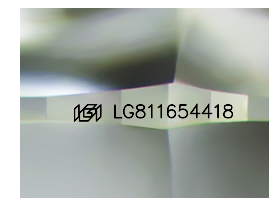
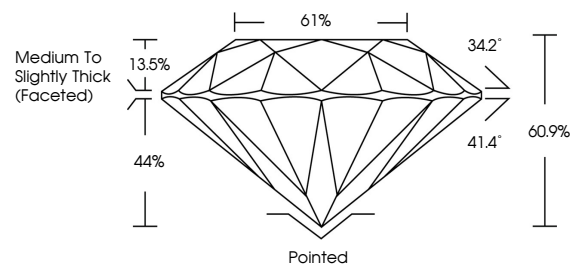
Carat Weight 1.07 CARAT
Color Grade D
Clarity Grade VVS 1
Cut Grade EXCELLENT

ADDITIONAL GRADING INFORMATION

Polish EXCELLENT
Symmetry EXCELLENT
Fluorescence NONE
Inscription(s) IGI LG811654418

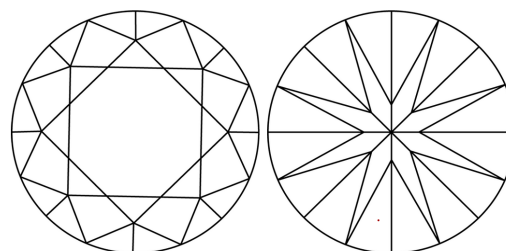
Comments: This Laboratory Grown Diamond was created by Chemical Vapor Deposition (CVD) growth process. Type IIa

PROPORTIONS



Sample Image Used

CLARITY CHARACTERISTICS



KEY TO SYMBOLS

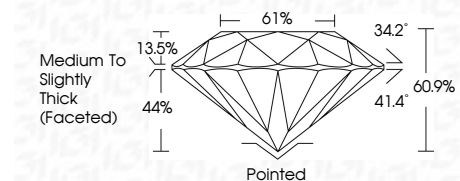
Red symbols indicate internal characteristics.
Green symbols indicate external characteristics.

COLOR

D E F G H I J Faint Very Light Light

CLARITY

FL IF VVS 1-2 VS 1-2 SI 1-2 I 1-3
Flawless Internally Flawless Very Very Slightly Included Very Slightly Included Slightly Included Included



ADDITIONAL GRADING INFORMATION

Polish EXCELLENT
Symmetry EXCELLENT
Fluorescence NONE
Inscription(s) IGI LG811654418
Comments: This Laboratory Grown Diamond was created by Chemical Vapor Deposition (CVD) growth process. Type IIa



June 16, 2026
IGI Report No LG811654418
ROUND BRILLIANT
6.55 - 6.58 X 4.00 MM
Carat Weight 1.07 CARAT
Color Grade D
Clarity Grade VVS 1
Cut Grade EXCELLENT
Depth 60.9%
Table 61%
Girdle Medium To Slightly Thick (Faceted)
Culet Pointed
Polish EXCELLENT
Symmetry EXCELLENT
Fluorescence NONE
Inscriptions(s) IGI LG811654418
Comments: This Laboratory Grown Diamond was created by Chemical Vapor Deposition (CVD) growth process. Type IIa