



ELECTRONIC COPY

LG811654170
Report verification at igi.org



June 18, 2026
IGI Report Number **LG811654170**
Description **LABORATORY GROWN DIAMOND**
Shape and Cutting Style **CUSHION MODIFIED BRILLIANT**
Measurements **10.01 X 7.62 X 5.05 MM**
GRADING RESULTS
Carat Weight **3.56 CARATS**
Color Grade **FANCY INTENSE BROWNISH PINK**
Clarity Grade **VS 1**

June 18, 2026
IGI Report Number **LG811654170**
Description **LABORATORY GROWN DIAMOND**
Shape and Cutting Style **CUSHION MODIFIED BRILLIANT**
Measurements **10.01 X 7.62 X 5.05 MM**

GRADING RESULTS

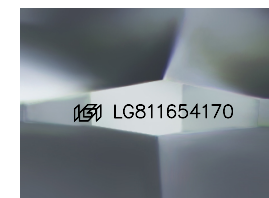
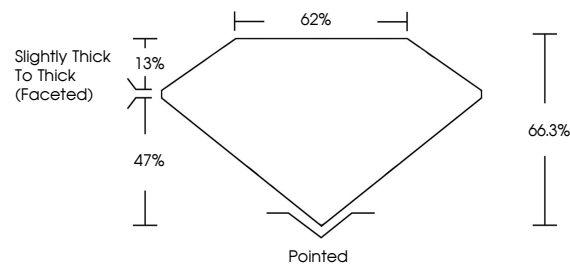
Carat Weight **3.56 CARATS**
Color Grade **FANCY INTENSE BROWNISH PINK**
Clarity Grade **VS 1**

ADDITIONAL GRADING INFORMATION

Polish **EXCELLENT**
Symmetry **EXCELLENT**
Fluorescence **SLIGHT**
Inscription(s) **IGI LG811654170**

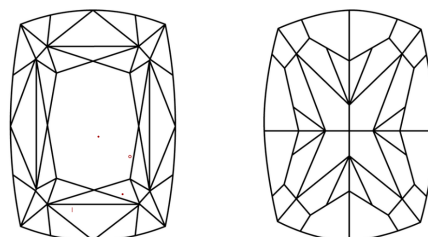
Comments: This Laboratory Grown Diamond was created by Chemical Vapor Deposition (CVD) growth process. Indications of post-growth treatment.

PROPORTIONS



Sample Image Used

CLARITY CHARACTERISTICS



KEY TO SYMBOLS

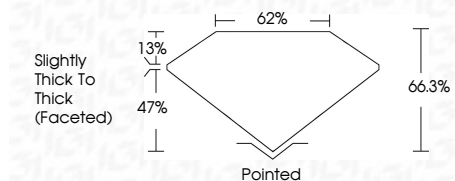
Red symbols indicate internal characteristics.
Green symbols indicate external characteristics.

COLOR

D E F G H I J Faint Very Light Light

CLARITY

FL	IF	VS ¹⁻²	VS ¹⁻²	SI ¹⁻²	I ¹⁻³
Flawless	Internally Flawless	Very Very Slightly Included	Very Slightly Included	Slightly Included	Included



ADDITIONAL GRADING INFORMATION

Polish **EXCELLENT**
Symmetry **EXCELLENT**
Fluorescence **SLIGHT**
Inscription(s) **IGI LG811654170**
Comments: This Laboratory Grown Diamond was created by Chemical Vapor Deposition (CVD) growth process. Indications of post-growth treatment.



June 18, 2026
IGI Report No LG811654170
CUSHION MODIFIED BRILLIANT
3.56 CARATS
Carat Weight
FANCY INTENSE BROWNISH PINK
Color Grade
VS 1
Clarity Grade
66.3%
62%
Slightly Thick To Thick (Faceted)
Pointed
Culet
Polish
EXCELLENT
Symmetry
EXCELLENT
Fluorescence
SLIGHT
Inscription(s)
IGI LG811654170
Comments: This Laboratory Grown Diamond was created by Chemical Vapor Deposition (CVD) growth process. Indications of post-growth treatment.