



ELECTRONIC COPY

LG811654142  
Report verification at igi.org



June 18, 2026  
IGI Report Number **LG811654142**  
Description **LABORATORY GROWN DIAMOND**  
Shape and Cutting Style **HEXAGONAL MODIFIED BRILLIANT**  
Measurements **14.28 X 7.10 X 4.56 MM**  
**GRADING RESULTS**  
Carat Weight **3.04 CARATS**  
Color Grade **G**  
Clarity Grade **VVS 2**

LABORATORY GROWN DIAMOND REPORT

June 18, 2026  
IGI Report Number **LG811654142**  
Description **LABORATORY GROWN DIAMOND**  
Shape and Cutting Style **HEXAGONAL MODIFIED BRILLIANT**  
Measurements **14.28 X 7.10 X 4.56 MM**

GRADING RESULTS

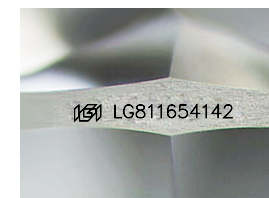
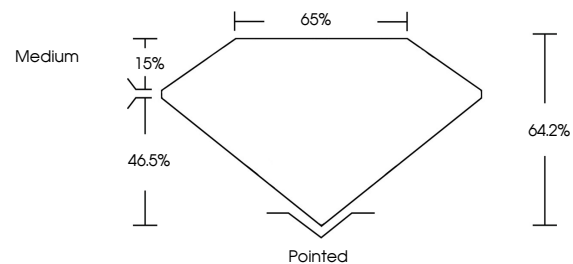
Carat Weight **3.04 CARATS**  
Color Grade **G**  
Clarity Grade **VVS 2**

ADDITIONAL GRADING INFORMATION

Polish **EXCELLENT**  
Symmetry **EXCELLENT**  
Fluorescence **NONE**  
Inscription(s) **IGI LG811654142**

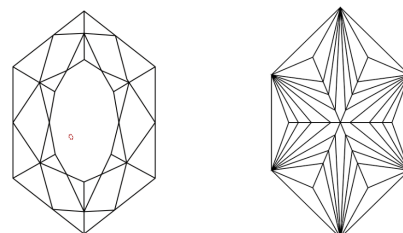
Comments: This Laboratory Grown Diamond was created by Chemical Vapor Deposition (CVD) growth process.  
Type IIa

PROPORTIONS



Sample Image Used

CLARITY CHARACTERISTICS



KEY TO SYMBOLS

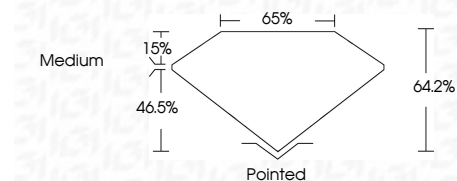
Red symbols indicate internal characteristics.  
Green symbols indicate external characteristics.

COLOR

D E F G H I J Faint Very Light Light

CLARITY

FL IF VVS<sup>1-2</sup> VS<sup>1-2</sup> SI<sup>1-2</sup> I<sup>1-3</sup>  
Flawless Internally Flawless Very Very Slightly Included Very Slightly Included Slightly Included Included



ADDITIONAL GRADING INFORMATION

Polish **EXCELLENT**  
Symmetry **EXCELLENT**  
Fluorescence **NONE**  
Inscription(s) **IGI LG811654142**  
Comments: This Laboratory Grown Diamond was created by Chemical Vapor Deposition (CVD) growth process.  
Type IIa



June 18, 2026  
IGI Report No LG811654142  
**HEXAGONAL MODIFIED BRILLIANT**  
14.28 X 7.10 X 4.56 MM  
Carat Weight **3.04 CARATS**  
Color Grade **G**  
Clarity Grade **VVS 2**  
Depth **64.2%**  
Table **46.5%**  
Girdle **Medium**  
Culet **Pointed**  
Polish **EXCELLENT**  
Symmetry **EXCELLENT**  
Fluorescence **NONE**  
Inscription(s) **IGI LG811654142**  
Comments: This Laboratory Grown Diamond was created by Chemical Vapor Deposition (CVD) growth process.  
Type IIa