



**ELECTRONIC COPY**

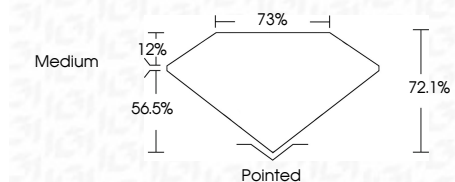
LG811652680  
Report verification at igi.org



June 17, 2026  
IGI Report Number **LG811652680**  
Description **LABORATORY GROWN DIAMOND**  
Shape and Cutting Style **PRINCESS CUT**  
Measurements **7.13 X 7.12 X 5.13 MM**

**GRADING RESULTS**

Carat Weight **2.24 CARATS**  
Color Grade **F**  
Clarity Grade **VS 1**



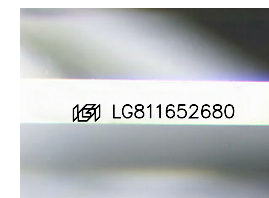
**ADDITIONAL GRADING INFORMATION**

Polish **EXCELLENT**  
Symmetry **EXCELLENT**  
Fluorescence **NONE**  
Inscription(s) **IGI LG811652680**  
Comments: This Laboratory Grown Diamond was created by Chemical Vapor Deposition (CVD) growth process. Type IIa



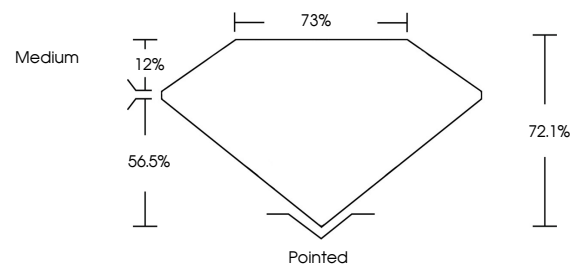
**IGI**

June 17, 2026  
IGI Report No LG811652680  
**PRINCESS CUT**  
7.13 X 7.12 X 5.13 MM  
2.24 CARATS  
Color Grade **F**  
Clarity Grade **VS 1**  
Depth **72.1%**  
Table **75%**  
Girdle **Medium**  
Culet **Pointed**  
Polish **EXCELLENT**  
Symmetry **EXCELLENT**  
Fluorescence **NONE**  
Inscription(s) **IGI LG811652680**  
Comments: This Laboratory Grown Diamond was created by Chemical Vapor Deposition (CVD) growth process. Type IIa

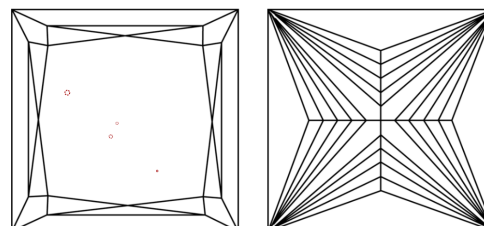


Sample Image Used

**PROPORTIONS**



**CLARITY CHARACTERISTICS**



**KEY TO SYMBOLS**

Red symbols indicate internal characteristics.  
Green symbols indicate external characteristics.

**COLOR**

D E F G H I J Faint Very Light Light

**CLARITY**

FL	IF	VS <sup>1-2</sup>	VS <sup>1-2</sup>	SI <sup>1-2</sup>	I <sup>1-3</sup>
Flawless	Internally Flawless	Very Very Slightly Included	Very Slightly Included	Slightly Included	Included

