



ELECTRONIC COPY

LG811627656
Report verification at igi.org



June 30, 2026

IGI Report Number **LG811627656**

Description **LABORATORY GROWN DIAMOND**

Shape and Cutting Style **PRINCESS CUT**

Measurements **9.67 X 9.46 X 6.39 MM**

GRADING RESULTS

Carat Weight **5.12 CARATS**

Color Grade **E**

Clarity Grade **VVS 2**

June 30, 2026
IGI Report Number **LG811627656**
Description **LABORATORY GROWN DIAMOND**
Shape and Cutting Style **PRINCESS CUT**
Measurements **9.67 X 9.46 X 6.39 MM**

GRADING RESULTS

Carat Weight **5.12 CARATS**

Color Grade **E**

Clarity Grade **VVS 2**

ADDITIONAL GRADING INFORMATION

Polish **EXCELLENT**

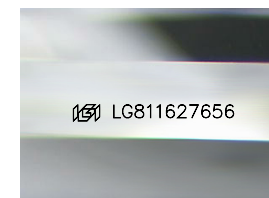
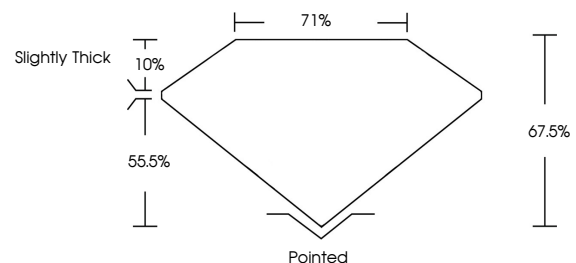
Symmetry **EXCELLENT**

Fluorescence **NONE**

Inscription(s) **IGI LG811627656**

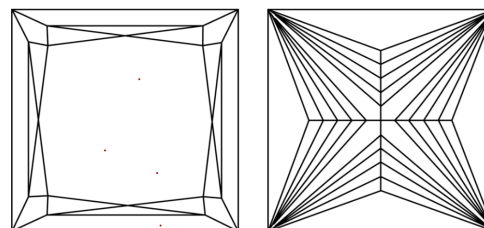
Comments: This Laboratory Grown Diamond was created by Chemical Vapor Deposition (CVD) growth process.
Type IIa

PROPORTIONS



Sample Image Used

CLARITY CHARACTERISTICS



KEY TO SYMBOLS

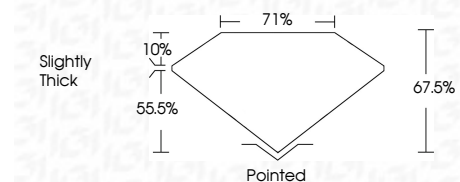
Red symbols indicate internal characteristics.
Green symbols indicate external characteristics.

COLOR

D E F G H I J Faint Very Light Light

CLARITY

FL	IF	VVS ¹⁻²	VS ¹⁻²	SI ¹⁻²	I ¹⁻³
Flawless	Internally Flawless	Very Very Slightly Included	Very Slightly Included	Slightly Included	Included



ADDITIONAL GRADING INFORMATION

Polish **EXCELLENT**

Symmetry **EXCELLENT**

Fluorescence **NONE**

Inscription(s) **IGI LG811627656**

Comments: This Laboratory Grown Diamond was created by Chemical Vapor Deposition (CVD) growth process.
Type IIa



IGI



June 30, 2026
IGI Report No. LG811627656
PRINCESS CUT
9.67 X 9.46 X 6.39 MM
6.12 CARATS
E
VVS 2
67.5%
71%
Slightly Thick
Pointed
EXCELLENT
EXCELLENT
NONE
IGI LG811627656
Comments: This Laboratory Grown Diamond was created by Chemical Vapor Deposition (CVD) growth process.
Type IIa