



ELECTRONIC COPY

LG811627446 Report verification at igi.org



June 27, 2026

IGI Report Number LG811627446

Description LABORATORY GROWN DIAMOND

Shape and Cutting Style ROUND BRILLIANT

Measurements 6.55 - 6.58 X 4.07 MM

GRADING RESULTS

Carat Weight 1.07 CARAT

Color Grade F

Clarity Grade VVS 2

Cut Grade IDEAL

June 27, 2026
IGI Report Number LG811627446
Description LABORATORY GROWN DIAMOND
Shape and Cutting Style ROUND BRILLIANT
Measurements 6.55 - 6.58 X 4.07 MM

GRADING RESULTS

Carat Weight 1.07 CARAT

Color Grade F

Clarity Grade VVS 2

Cut Grade IDEAL

ADDITIONAL GRADING INFORMATION

Polish EXCELLENT

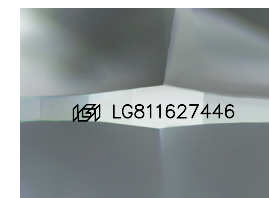
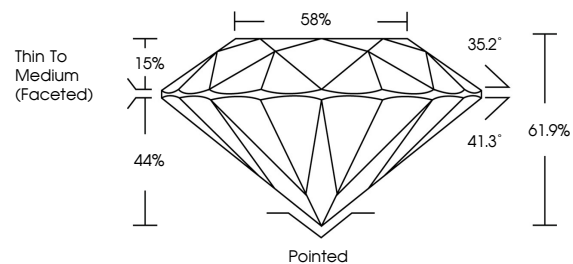
Symmetry EXCELLENT

Fluorescence NONE

Inscription(s) IGI LG811627446

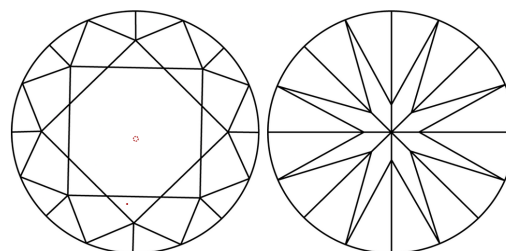
Comments: This Laboratory Grown Diamond was created by Chemical Vapor Deposition (CVD) growth process. Type IIa

PROPORTIONS



Sample Image Used

CLARITY CHARACTERISTICS



KEY TO SYMBOLS

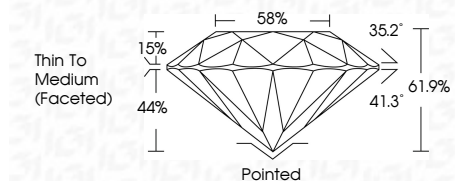
Red symbols indicate internal characteristics. Green symbols indicate external characteristics.

COLOR

D E F G H I J Faint Very Light Light

CLARITY

FL IF VVS 1-2 VS 1-2 SI 1-2 I 1-3
Flawless Internally Flawless Very Very Slightly Included Very Slightly Included Slightly Included Included



ADDITIONAL GRADING INFORMATION

Polish EXCELLENT

Symmetry EXCELLENT

Fluorescence NONE

Inscription(s) IGI LG811627446

Comments: This Laboratory Grown Diamond was created by Chemical Vapor Deposition (CVD) growth process. Type IIa



IGI



Table with 2 columns: Property and Value. Includes: June 27, 2026, IGI Report No LG811627446, ROUND BRILLIANT, 6.55 - 6.58 X 4.07 MM, 1.07 CARAT, F, VVS 2, IDEAL, 61.9%, 58%, Thin To Medium (Faceted), Pointed, EXCELLENT, EXCELLENT, NONE, IGI LG811627446. Comments: This Laboratory Grown Diamond was created by Chemical Vapor Deposition (CVD) growth process. Type IIa