



ELECTRONIC COPY

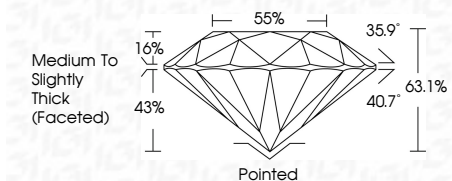
LG811626896 Report verification at igi.org



June 26, 2026 IGI Report Number LG811626896 Description LABORATORY GROWN DIAMOND Shape and Cutting Style ROUND BRILLIANT Measurements 6.76 - 6.80 X 4.29 MM

GRADING RESULTS

Carat Weight 1.22 CARAT Color Grade D Clarity Grade VVS 2 Cut Grade EXCELLENT



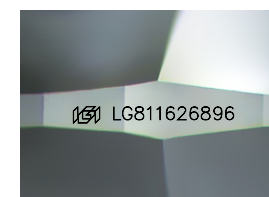
ADDITIONAL GRADING INFORMATION

Polish EXCELLENT Symmetry EXCELLENT Fluorescence NONE Inscription(s) LG811626896 Comments: As Grown - No indication of post-growth treatment. This Laboratory Grown Diamond was created by High Pressure High Temperature (HPHT) growth process. Type II



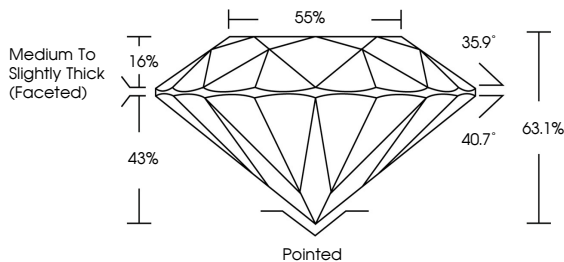
June 26, 2026 IGI Report No LG811626896 ROUND BRILLIANT 6.76 - 6.80 X 4.29 MM 1.22 CARAT D VVS 2 EXCELLENT 63.1% 85% Medium To Slightly Thick (Faceted) Pointed EXCELLENT EXCELLENT NONE LG811626896

Comments: As Grown - No indication of post-growth treatment. This Laboratory Grown Diamond was created by High Pressure High Temperature (HPHT) growth process. Type II

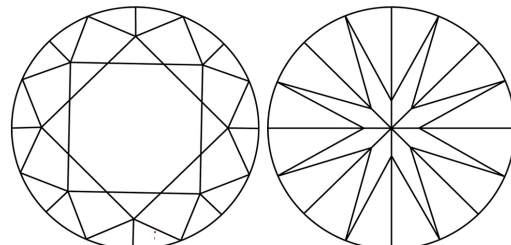


Sample Image Used

PROPORTIONS



CLARITY CHARACTERISTICS



KEY TO SYMBOLS

Red symbols indicate internal characteristics. Green symbols indicate external characteristics.

COLOR

D E F G H I J Faint Very Light Light

CLARITY

FL IF VVS 1-2 VS 1-2 SI 1-2 I 1-3 Flawless Internally Flawless Very Very Slightly Included Very Slightly Included Slightly Included Included

