



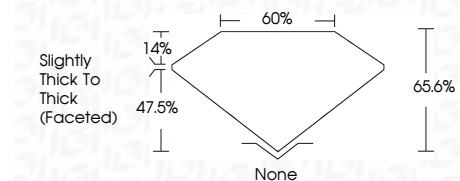
ELECTRONIC COPY

LG811626342
Report verification at igi.org



July 2, 2026
IGI Report Number **LG811626342**
Description **LABORATORY GROWN DIAMOND**
Shape and Cutting Style **HEART BRILLIANT**
Measurements **7.44 X 8.50 X 5.58 MM**

GRADING RESULTS
Carat Weight **2.01 CARATS**
Color Grade **FANCY INTENSE PINK**
Clarity Grade **VVS 2**



ADDITIONAL GRADING INFORMATION
Polish **EXCELLENT**
Symmetry **EXCELLENT**
Fluorescence **SLIGHT**
Inscription(s) **IGI LG811626342**
Comments: This Laboratory Grown Diamond was created by Chemical Vapor Deposition (CVD) growth process. Indications of post-growth treatment.



July 2, 2026
IGI Report No LG811626342
HEART BRILLIANT
7.44 X 8.50 X 5.58 MM
2.01 CARATS
FANCY INTENSE PINK
VVS 2
65.6%
None
None
EXCELLENT
EXCELLENT
SLIGHT
IGI LG811626342

Comments: This Laboratory Grown Diamond was created by Chemical Vapor Deposition (CVD) growth process. Indications of post-growth treatment.

LABORATORY GROWN DIAMOND REPORT

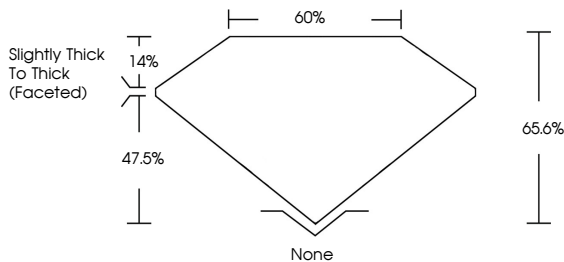
July 2, 2026
IGI Report Number **LG811626342**
Description **LABORATORY GROWN DIAMOND**
Shape and Cutting Style **HEART BRILLIANT**
Measurements **7.44 X 8.50 X 5.58 MM**

GRADING RESULTS
Carat Weight **2.01 CARATS**
Color Grade **FANCY INTENSE PINK**
Clarity Grade **VVS 2**

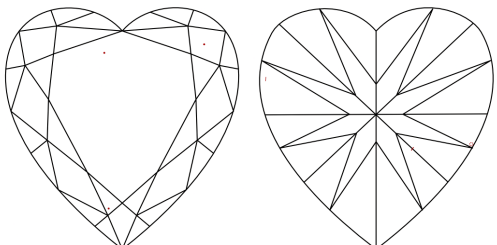
ADDITIONAL GRADING INFORMATION
Polish **EXCELLENT**
Symmetry **EXCELLENT**
Fluorescence **SLIGHT**
Inscription(s) **IGI LG811626342**

Comments: This Laboratory Grown Diamond was created by Chemical Vapor Deposition (CVD) growth process. Indications of post-growth treatment.

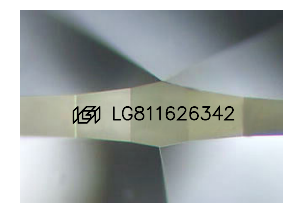
PROPORTIONS



CLARITY CHARACTERISTICS



KEY TO SYMBOLS
Red symbols indicate internal characteristics.
Green symbols indicate external characteristics.



Sample Image Used

COLOR

D	E	F	G	H	I	J	Faint	Very Light	Light
---	---	---	---	---	---	---	-------	------------	-------

CLARITY

FL	IF	VVS ¹⁻²	VS ¹⁻²	SI ¹⁻²	I ¹⁻³
Flawless	Internally Flawless	Very Very Slightly Included	Very Slightly Included	Slightly Included	Included

