



ELECTRONIC COPY

LG811621808
Report verification at igi.org



July 1, 2026
IGI Report Number **LG811621808**
Description **LABORATORY GROWN DIAMOND**
Shape and Cutting Style **ROUND BRILLIANT**
Measurements **12.05 - 12.15 X 7.41 MM**
GRADING RESULTS
Carat Weight **6.69 CARATS**
Color Grade **VERY LIGHT BROWNISH YELLOW**
Clarity Grade **VVS 2**
Cut Grade **IDEAL**

July 1, 2026
IGI Report Number **LG811621808**
Description **LABORATORY GROWN DIAMOND**
Shape and Cutting Style **ROUND BRILLIANT**
Measurements **12.05 - 12.15 X 7.41 MM**

GRADING RESULTS

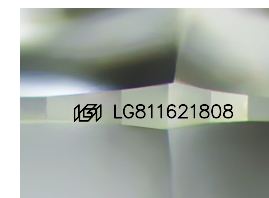
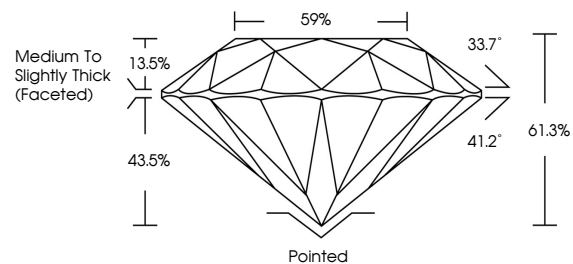
Carat Weight **6.69 CARATS**
Color Grade **VERY LIGHT BROWNISH YELLOW**
Clarity Grade **VVS 2**
Cut Grade **IDEAL**

ADDITIONAL GRADING INFORMATION

Polish **EXCELLENT**
Symmetry **EXCELLENT**
Fluorescence **VERY SLIGHT**
Inscription(s) **IGI LG811621808**

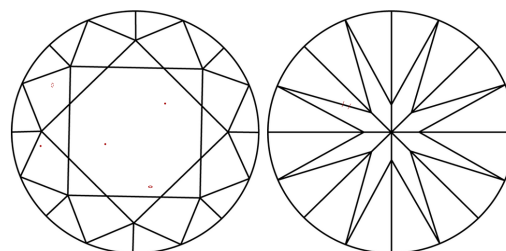
Comments: This Laboratory Grown Diamond was created by Chemical Vapor Deposition (CVD) growth process. Type IIa

PROPORTIONS



Sample Image Used

CLARITY CHARACTERISTICS



KEY TO SYMBOLS

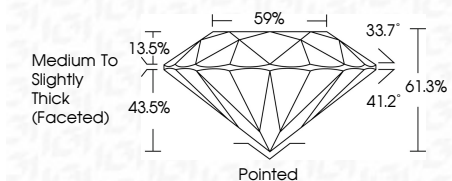
Red symbols indicate internal characteristics.
Green symbols indicate external characteristics.

COLOR

D E F G H I J Faint Very Light Light

CLARITY

FL	IF	VVS ¹⁻²	VS ¹⁻²	SI ¹⁻²	I ¹⁻³
Flawless	Internally Flawless	Very Very Slightly Included	Very Slightly Included	Slightly Included	Included



ADDITIONAL GRADING INFORMATION

Polish **EXCELLENT**
Symmetry **EXCELLENT**
Fluorescence **VERY SLIGHT**
Inscription(s) **IGI LG811621808**
Comments: This Laboratory Grown Diamond was created by Chemical Vapor Deposition (CVD) growth process. Type IIa



IGI



July 1, 2026
IGI Report No LG811621808
ROUND BRILLIANT
12.05 - 12.15 X 7.41 MM
6.69 CARATS
Carat Weight
Color Grade **VERY LIGHT BROWNISH YELLOW**
Clarity Grade **VVS 2**
Depth **IDEAL**
Table **61.3%**
Girdle **Medium To Slightly Thick (Faceted)**
Culet **Pointed**
Polish **EXCELLENT**
Symmetry **EXCELLENT**
Fluorescence **VERY SLIGHT**
Inscription(s) **IGI LG811621808**
Comments: This Laboratory Grown Diamond was created by Chemical Vapor Deposition (CVD) growth process. Type IIa