



ELECTRONIC COPY

LG811621618
Report verification at igi.org



June 26, 2026
IGI Report Number **LG811621618**
Description **LABORATORY GROWN DIAMOND**
Shape and Cutting Style **ROUND BRILLIANT**
Measurements **8.59 - 8.64 X 5.37 MM**
GRADING RESULTS
Carat Weight **2.50 CARATS**
Color Grade **FANCY INTENSE PINK**
Clarity Grade **VVS 1**
Cut Grade **IDEAL**

June 26, 2026
IGI Report Number **LG811621618**
Description **LABORATORY GROWN DIAMOND**
Shape and Cutting Style **ROUND BRILLIANT**
Measurements **8.59 - 8.64 X 5.37 MM**

GRADING RESULTS

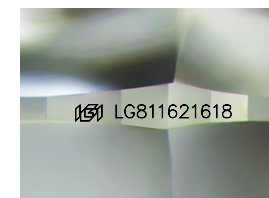
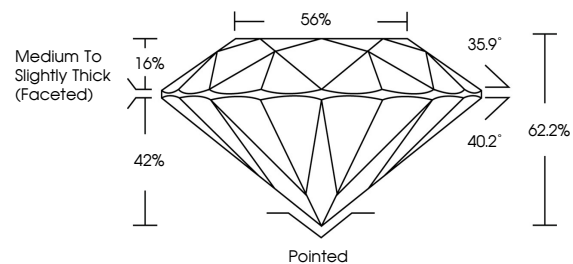
Carat Weight **2.50 CARATS**
Color Grade **FANCY INTENSE PINK**
Clarity Grade **VVS 1**
Cut Grade **IDEAL**

ADDITIONAL GRADING INFORMATION

Polish **EXCELLENT**
Symmetry **EXCELLENT**
Fluorescence **SLIGHT**
Inscription(s) **IGI LG811621618**

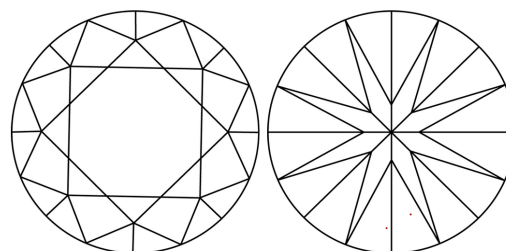
Comments: This Laboratory Grown Diamond was created by Chemical Vapor Deposition (CVD) growth process.
Indications of post-growth treatment.

PROPORTIONS



Sample Image Used

CLARITY CHARACTERISTICS



KEY TO SYMBOLS

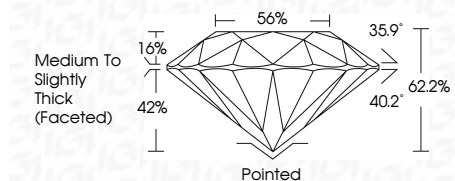
Red symbols indicate internal characteristics.
Green symbols indicate external characteristics.

COLOR

D E F G H I J Faint Very Light Light

CLARITY

FL	IF	VVS ¹⁻²	VS ¹⁻²	SI ¹⁻²	I ¹⁻³
Flawless	Internally Flawless	Very Very Slightly Included	Very Slightly Included	Slightly Included	Included



ADDITIONAL GRADING INFORMATION

Polish **EXCELLENT**
Symmetry **EXCELLENT**
Fluorescence **SLIGHT**
Inscription(s) **IGI LG811621618**
Comments: This Laboratory Grown Diamond was created by Chemical Vapor Deposition (CVD) growth process.
Indications of post-growth treatment.



June 26, 2026
IGI Report No LG811621618
ROUND BRILLIANT
8.59 - 8.64 X 5.37 MM
2.50 CARATS
FANCY INTENSE PINK
VVS 1
IDEAL
62.2%
56%
Medium To Slightly Thick (Faceted)
Pointed
EXCELLENT
EXCELLENT
SLIGHT
IGI LG811621618
Comments: This Laboratory Grown Diamond was created by Chemical Vapor Deposition (CVD) growth process.
Indications of post-growth treatment.