



ELECTRONIC COPY

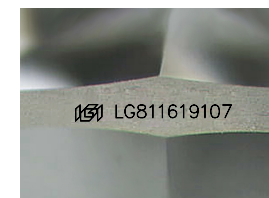
LG811619107
Report verification at igi.org



June 26, 2026
IGI Report Number **LG811619107**
Description **LABORATORY GROWN DIAMOND**
Shape and Cutting Style **MODIFIED TRILLIANT CUT**
Measurements **7.86 X 9.08 X 4.34 MM**

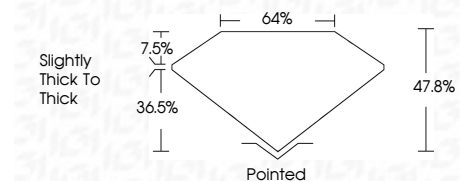
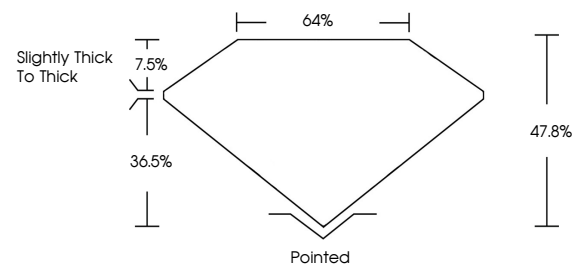
GRADING RESULTS

Carat Weight **1.39 CARAT**
Color Grade **D**
Clarity Grade **VVS 2**

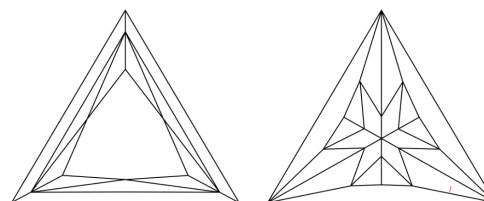


Sample Image Used

PROPORTIONS



CLARITY CHARACTERISTICS



KEY TO SYMBOLS

Red symbols indicate internal characteristics.
Green symbols indicate external characteristics.

COLOR

D E F G H I J Faint Very Light Light

CLARITY

FL	IF	VVS ¹⁻²	VS ¹⁻²	SI ¹⁻²	I ¹⁻³
Flawless	Internally Flawless	Very Very Slightly Included	Very Slightly Included	Slightly Included	Included

ADDITIONAL GRADING INFORMATION

Polish **EXCELLENT**
Symmetry **EXCELLENT**
Fluorescence **NONE**
Inscription(s) **IGI LG811619107**
Comments: As Grown - No indication of post-growth treatment.
This Laboratory Grown Diamond was created by High Pressure High Temperature (HPHT) growth process.
Type II



IGI



June 26, 2026
IGI Report No LG811619107
MODIFIED TRILLIANT CUT
7.86 X 9.08 X 4.34 MM
1.39 CARAT
Color Grade **D**
Clarity Grade **VVS 2**
Depth **47.0%**
Table **64%**
Girdle **Slightly thick to thick**
Culet **Pointed**
Polish **EXCELLENT**
Symmetry **EXCELLENT**
Fluorescence **NONE**
Inscription(s) **IGI LG811619107**
Comments: As Grown - No indication of post-growth treatment.
This Laboratory Grown Diamond was created by High Pressure High Temperature (HPHT) growth process.
Type II