



ELECTRONIC COPY

LG811618624
Report verification at igi.org



June 23, 2026

IGI Report Number **LG811618624**

Description **LABORATORY GROWN DIAMOND**

Shape and Cutting Style **ROUND BRILLIANT**

Measurements **6.60 - 6.64 X 4.08 MM**

GRADING RESULTS

Carat Weight **1.10 CARAT**

Color Grade **D**

Clarity Grade **VVS 2**

Cut Grade **IDEAL**

June 23, 2026
IGI Report Number **LG811618624**
Description **LABORATORY GROWN DIAMOND**
Shape and Cutting Style **ROUND BRILLIANT**
Measurements **6.60 - 6.64 X 4.08 MM**

GRADING RESULTS

Carat Weight **1.10 CARAT**

Color Grade **D**

Clarity Grade **VVS 2**

Cut Grade **IDEAL**

ADDITIONAL GRADING INFORMATION

Polish **EXCELLENT**

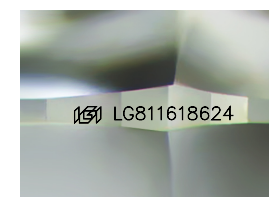
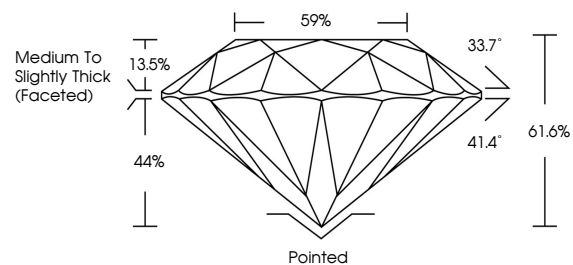
Symmetry **EXCELLENT**

Fluorescence **NONE**

Inscription(s) **IGI LG811618624**

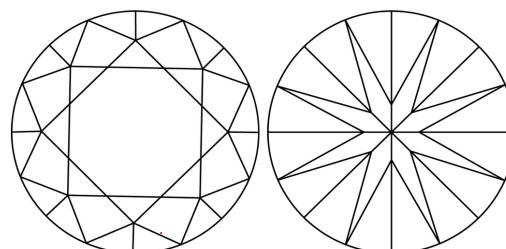
Comments: This Laboratory Grown Diamond was created by Chemical Vapor Deposition (CVD) growth process. Type IIa

PROPORTIONS



Sample Image Used

CLARITY CHARACTERISTICS



KEY TO SYMBOLS

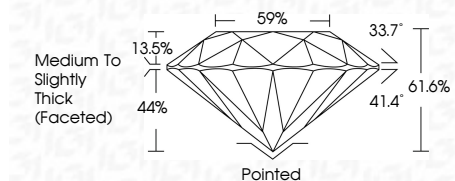
Red symbols indicate internal characteristics.
Green symbols indicate external characteristics.

COLOR

D E F G H I J Faint Very Light Light

CLARITY

| FL | IF | VVS ¹⁻² | VS ¹⁻² | SI ¹⁻² | I ¹⁻³ |
|----------|---------------------|-----------------------------|------------------------|-------------------|------------------|
| Flawless | Internally Flawless | Very Very Slightly Included | Very Slightly Included | Slightly Included | Included |



ADDITIONAL GRADING INFORMATION

Polish **EXCELLENT**

Symmetry **EXCELLENT**

Fluorescence **NONE**

Inscription(s) **IGI LG811618624**

Comments: This Laboratory Grown Diamond was created by Chemical Vapor Deposition (CVD) growth process. Type IIa



IGI



| | | | | | | | | |
|-----------------|---------------------------|---------------|-----------|----------------|-----------|-----------|------------------------------------|-----------------|
| June 23, 2026 | IGI Report No LG811618624 | 1.10 CARAT | D | Pointed | EXCELLENT | EXCELLENT | NONE | IGI LG811618624 |
| ROUND BRILLIANT | 6.60 - 6.64 X 4.08 MM | Color Grade | VVS 2 | Depth | IDEAL | 61.6% | Medium To Slightly Thick (Faceted) | |
| | | Clarity Grade | IDEAL | Cut Grade | 59% | | | |
| | | Polish | EXCELLENT | Symmetry | EXCELLENT | NONE | | |
| | | Fluorescence | NONE | Inscription(s) | | | | |

Comments: This Laboratory Grown Diamond was created by Chemical Vapor Deposition (CVD) growth process. Type IIa