



ELECTRONIC COPY

LG811609764
Report verification at igi.org



June 22, 2026
IGI Report Number **LG811609764**
Description **LABORATORY GROWN DIAMOND**
Shape and Cutting Style **HEXAGONAL MODIFIED BRILLIANT**
Measurements **10.68 X 5.15 X 3.61 MM**
GRADING RESULTS
Carat Weight **1.28 CARAT**
Color Grade **K**
Clarity Grade **VS 1**

LABORATORY GROWN DIAMOND REPORT

June 22, 2026
IGI Report Number **LG811609764**
Description **LABORATORY GROWN DIAMOND**
Shape and Cutting Style **HEXAGONAL MODIFIED BRILLIANT**
Measurements **10.68 X 5.15 X 3.61 MM**

GRADING RESULTS

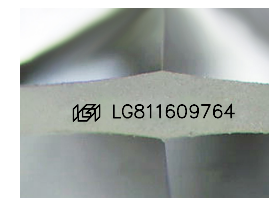
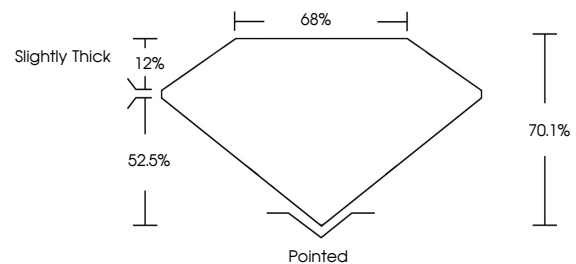
Carat Weight **1.28 CARAT**
Color Grade **K**
Clarity Grade **VS 1**

ADDITIONAL GRADING INFORMATION

Polish **EXCELLENT**
Symmetry **EXCELLENT**
Fluorescence **NONE**
Inscription(s) **IGI LG811609764**

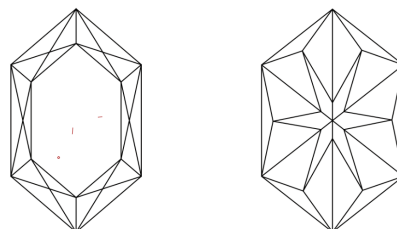
Comments: This Laboratory Grown Diamond was created by Chemical Vapor Deposition (CVD) growth process.
Type IIa
Faint Brown

PROPORTIONS



Sample Image Used

CLARITY CHARACTERISTICS



KEY TO SYMBOLS

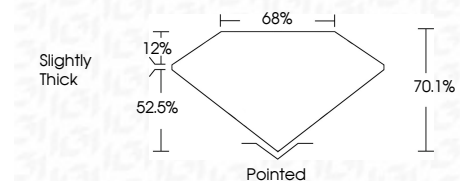
Red symbols indicate internal characteristics.
Green symbols indicate external characteristics.

COLOR

D E F G H I J Faint Very Light Light

CLARITY

FL	IF	VS ¹⁻²	VS ¹⁻²	SI ¹⁻²	I ¹⁻³
Flawless	Internally Flawless	Very Very Slightly Included	Very Slightly Included	Slightly Included	Included



ADDITIONAL GRADING INFORMATION

Polish **EXCELLENT**
Symmetry **EXCELLENT**
Fluorescence **NONE**
Inscription(s) **IGI LG811609764**
Comments: This Laboratory Grown Diamond was created by Chemical Vapor Deposition (CVD) growth process.
Type IIa
Faint Brown



June 22, 2026
IGI Report No LG811609764
HEXAGONAL MODIFIED BRILLIANT
10.68 X 5.15 X 3.61 MM
1.28 CARAT
K
VS 1
70.1%
68%
Slightly Thick
Pointed
EXCELLENT
EXCELLENT
NONE
IGI LG811609764
Comments: This Laboratory Grown Diamond was created by Chemical Vapor Deposition (CVD) growth process.
Type IIa
Faint Brown