



**ELECTRONIC COPY**

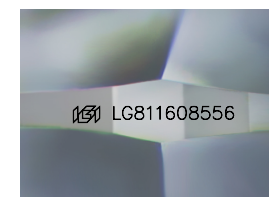
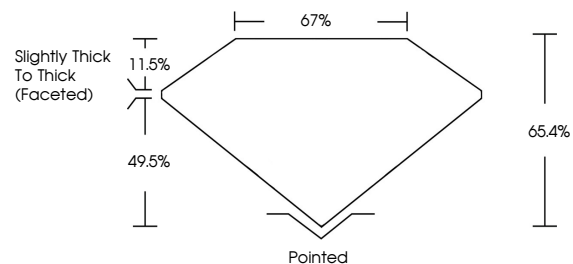
LG811608556  
Report verification at [igi.org](http://igi.org)



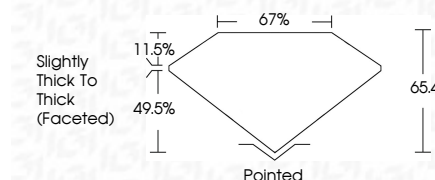
June 17, 2026  
IGI Report Number **LG811608556**  
Description **LABORATORY GROWN DIAMOND**  
Shape and Cutting Style **CUSHION MODIFIED BRILLIANT**  
Measurements **10.53 X 7.52 X 4.92 MM**  
**GRADING RESULTS**  
Carat Weight **3.50 CARATS**  
Color Grade **G**  
Clarity Grade **VVS 2**

June 17, 2026  
IGI Report Number **LG811608556**  
Description **LABORATORY GROWN DIAMOND**  
Shape and Cutting Style **CUSHION MODIFIED BRILLIANT**  
Measurements **10.53 X 7.52 X 4.92 MM**  
**GRADING RESULTS**  
Carat Weight **3.50 CARATS**  
Color Grade **G**  
Clarity Grade **VVS 2**

**PROPORTIONS**



Sample Image Used



**ADDITIONAL GRADING INFORMATION**

Polish **EXCELLENT**  
Symmetry **EXCELLENT**  
Fluorescence **NONE**  
Inscription(s) **IGI LG811608556**

Comments: This Laboratory Grown Diamond was created by Chemical Vapor Deposition (CVD) growth process.  
Type IIa

**ADDITIONAL GRADING INFORMATION**

Polish **EXCELLENT**  
Symmetry **EXCELLENT**  
Fluorescence **NONE**  
Inscription(s) **IGI LG811608556**  
Comments: This Laboratory Grown Diamond was created by Chemical Vapor Deposition (CVD) growth process.  
Type IIa

**COLOR**

D E F G H I J Faint Very Light Light

**CLARITY**

FL	IF	VVS <sup>1-2</sup>	VS <sup>1-2</sup>	SI <sup>1-2</sup>	I <sup>1-3</sup>
Flawless	Internally Flawless	Very Very Slightly Included	Very Slightly Included	Slightly Included	Included



**IGI**



June 17, 2026  
IGI Report No **LG811608556**  
**CUSHION MODIFIED BRILLIANT**  
**3.50 CARATS**  
Carat Weight **G**  
Color Grade **VVS 2**  
Clarity Grade **65.4%**  
Depth **67%**  
Table **Slightly Thick To Thick (Faceted)**  
Girdle **Pointed**  
Culet **EXCELLENT**  
Polish **EXCELLENT**  
Symmetry **EXCELLENT**  
Fluorescence **NONE**  
Inscription(s) **IGI LG811608556**

Comments: This Laboratory Grown Diamond was created by Chemical Vapor Deposition (CVD) growth process.  
Type IIa