



ELECTRONIC COPY

LG811603564 Report verification at igi.org



June 18, 2026 IGI Report Number LG811603564 Description LABORATORY GROWN DIAMOND Shape and Cutting Style CUSHION MODIFIED BRILLIANT Measurements 10.60 X 7.33 X 5.22 MM GRADING RESULTS Carat Weight 4.00 CARATS Color Grade FANCY INTENSE YELLOW Clarity Grade VVS 2

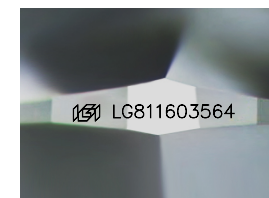
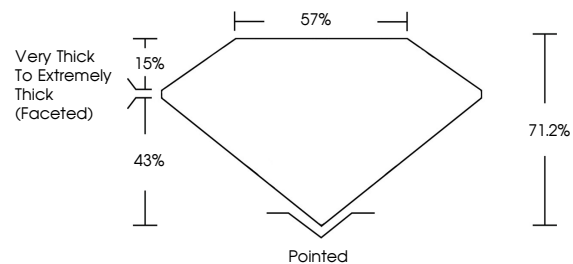
June 18, 2026 IGI Report Number LG811603564 Description LABORATORY GROWN DIAMOND Shape and Cutting Style CUSHION MODIFIED BRILLIANT Measurements 10.60 X 7.33 X 5.22 MM

GRADING RESULTS Carat Weight 4.00 CARATS Color Grade FANCY INTENSE YELLOW Clarity Grade VVS 2

ADDITIONAL GRADING INFORMATION Polish EXCELLENT Symmetry EXCELLENT Fluorescence NONE Inscription(s) IGI LG811603564

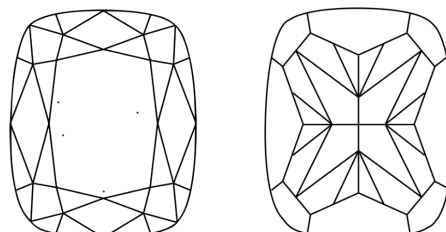
Comments: This Laboratory Grown Diamond was created by Chemical Vapor Deposition (CVD) growth process.

PROPORTIONS



Sample Image Used

CLARITY CHARACTERISTICS



KEY TO SYMBOLS

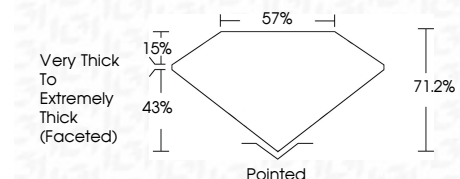
Red symbols indicate internal characteristics. Green symbols indicate external characteristics.

COLOR

D E F G H I J Faint Very Light Light

CLARITY

FL IF VVS 1-2 VS 1-2 SI 1-2 I 1-3 Flawless Internally Flawless Very Very Slightly Included Very Slightly Included Slightly Included Included



ADDITIONAL GRADING INFORMATION

Polish EXCELLENT Symmetry EXCELLENT Fluorescence NONE Inscription(s) IGI LG811603564 Comments: This Laboratory Grown Diamond was created by Chemical Vapor Deposition (CVD) growth process.



June 18, 2026 IGI Report No LG811603564 CUSHION MODIFIED BRILLIANT 4.00 CARATS FANCY INTENSE YELLOW VVS 2 10.60 X 7.33 X 5.22 MM 71.2% 57% Very Thick to Extremely Thick (Faceted) Pointed EXCELLENT EXCELLENT NONE NONE IGI LG811603564 Comments: This Laboratory Grown Diamond was created by Chemical Vapor Deposition (CVD) growth process.