



**ELECTRONIC COPY**

LG810646183  
Report verification at igi.org



June 20, 2026  
IGI Report Number **LG810646183**  
Description **LABORATORY GROWN DIAMOND**  
Shape and Cutting Style **CUSHION MODIFIED BRILLIANT**  
Measurements **9.32 X 6.52 X 4.43 MM**  
**GRADING RESULTS**  
Carat Weight **2.07 CARATS**  
Color Grade **FANCY VIVID PINK**  
Clarity Grade **VS 2**

June 20, 2026  
IGI Report Number **LG810646183**  
Description **LABORATORY GROWN DIAMOND**  
Shape and Cutting Style **CUSHION MODIFIED BRILLIANT**  
Measurements **9.32 X 6.52 X 4.43 MM**

**GRADING RESULTS**

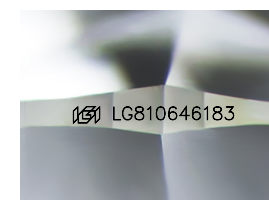
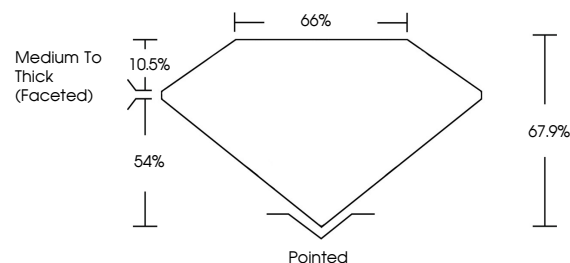
Carat Weight **2.07 CARATS**  
Color Grade **FANCY VIVID PINK**  
Clarity Grade **VS 2**

**ADDITIONAL GRADING INFORMATION**

Polish **EXCELLENT**  
Symmetry **EXCELLENT**  
Fluorescence **SLIGHT**  
Inscription(s) **IGI LG810646183**

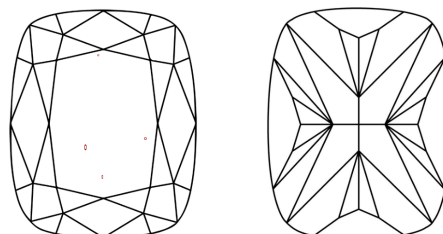
Comments: This Laboratory Grown Diamond was created by Chemical Vapor Deposition (CVD) growth process.  
Indications of post-growth treatment.

**PROPORTIONS**



Sample Image Used

**CLARITY CHARACTERISTICS**



**KEY TO SYMBOLS**

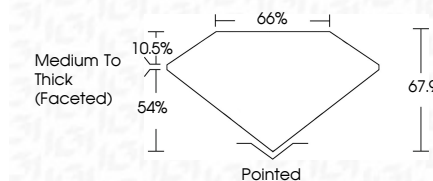
Red symbols indicate internal characteristics.  
Green symbols indicate external characteristics.

**COLOR**

D E F G H I J Faint Very Light Light

**CLARITY**

FL	IF	VS <sup>1-2</sup>	VS <sup>1-2</sup>	SI <sup>1-2</sup>	I <sup>1-3</sup>
Flawless	Internally Flawless	Very Very Slightly Included	Very Slightly Included	Slightly Included	Included



**ADDITIONAL GRADING INFORMATION**

Polish **EXCELLENT**  
Symmetry **EXCELLENT**  
Fluorescence **SLIGHT**  
Inscription(s) **IGI LG810646183**  
Comments: This Laboratory Grown Diamond was created by Chemical Vapor Deposition (CVD) growth process.  
Indications of post-growth treatment.



June 20, 2026  
IGI Report No LG810646183  
**CUSHION MODIFIED BRILLIANT**  
9.32 X 6.52 X 4.43 MM  
2.07 CARATS  
FANCY VIVID PINK  
VS 2  
67.9%  
65%  
Medium To Thick (Faceted)  
Pointed  
EXCELLENT  
EXCELLENT  
SLIGHT  
IGI LG810646183  
Comments: This Laboratory Grown Diamond was created by Chemical Vapor Deposition (CVD) growth process.  
Indications of post-growth treatment.