



**ELECTRONIC COPY**

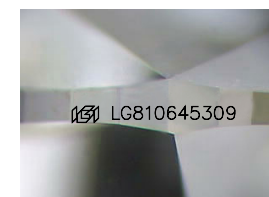
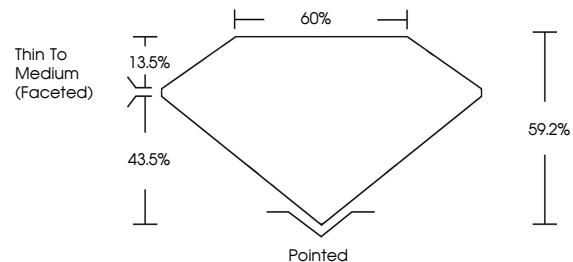
LG810645309  
Report verification at igi.org



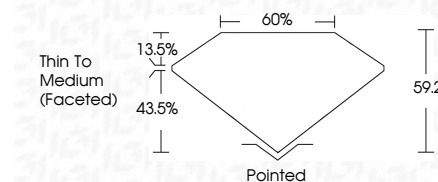
June 15, 2026  
IGI Report Number **LG810645309**  
Description **LABORATORY GROWN DIAMOND**  
Shape and Cutting Style **OVAL BRILLIANT**  
Measurements **13.31 X 8.94 X 5.29 MM**  
**GRADING RESULTS**  
Carat Weight **3.81 CARATS**  
Color Grade **D**  
Clarity Grade **VVS 2**

June 15, 2026  
IGI Report Number **LG810645309**  
Description **LABORATORY GROWN DIAMOND**  
Shape and Cutting Style **OVAL BRILLIANT**  
Measurements **13.31 X 8.94 X 5.29 MM**  
**GRADING RESULTS**  
Carat Weight **3.81 CARATS**  
Color Grade **D**  
Clarity Grade **VVS 2**

**PROPORTIONS**



Sample Image Used



**ADDITIONAL GRADING INFORMATION**

Polish **EXCELLENT**  
Symmetry **EXCELLENT**  
Fluorescence **NONE**  
Inscription(s) **IGI LG810645309**

Comments: This Laboratory Grown Diamond was created by Chemical Vapor Deposition (CVD) growth process.  
Type IIa

**ADDITIONAL GRADING INFORMATION**

Polish **EXCELLENT**  
Symmetry **EXCELLENT**  
Fluorescence **NONE**  
Inscription(s) **IGI LG810645309**  
Comments: This Laboratory Grown Diamond was created by Chemical Vapor Deposition (CVD) growth process.  
Type IIa

**COLOR**

D E F G H I J Faint Very Light Light

**CLARITY**

FL	IF	VS <sup>1-2</sup>	VS <sup>1-2</sup>	SI <sup>1-2</sup>	I <sup>1-3</sup>
Flawless	Internally Flawless	Very Very Slightly Included	Very Slightly Included	Slightly Included	Included



**IGI**



June 15, 2026  
IGI Report No LG810645309  
OVAL BRILLIANT  
3.81 CARATS  
Color Grade D  
Clarity Grade VVS 2  
Table 60%  
Girdle 43.5%  
Thin To Medium (Faceted)  
Culet Pointed  
Polish EXCELLENT  
Symmetry EXCELLENT  
Fluorescence NONE  
Inscription(s) IGI LG810645309

Comments: This Laboratory Grown Diamond was created by Chemical Vapor Deposition (CVD) growth process.  
Type IIa