



**ELECTRONIC COPY**

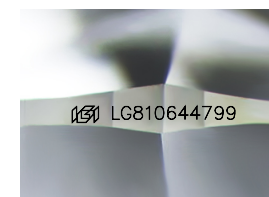
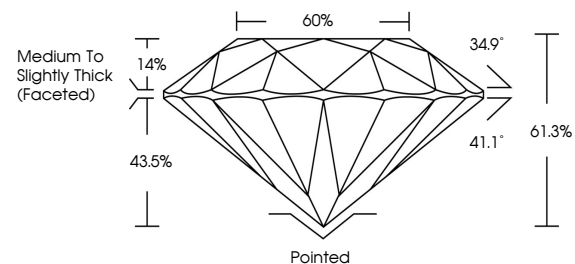
LG810644799  
Report verification at [igi.org](http://igi.org)



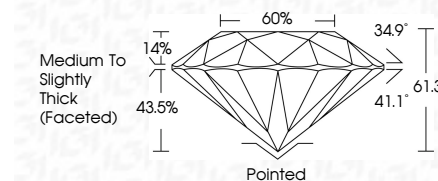
June 16, 2026  
IGI Report Number **LG810644799**  
Description **LABORATORY GROWN DIAMOND**  
Shape and Cutting Style **ROUND BRILLIANT**  
Measurements **8.36 - 8.42 X 5.14 MM**  
**GRADING RESULTS**  
Carat Weight **2.23 CARATS**  
Color Grade **D**  
Clarity Grade **VVS 2**  
Cut Grade **IDEAL**

June 16, 2026  
IGI Report Number **LG810644799**  
Description **LABORATORY GROWN DIAMOND**  
Shape and Cutting Style **ROUND BRILLIANT**  
Measurements **8.36 - 8.42 X 5.14 MM**  
**GRADING RESULTS**  
Carat Weight **2.23 CARATS**  
Color Grade **D**  
Clarity Grade **VVS 2**  
Cut Grade **IDEAL**

**PROPORTIONS**



Sample Image Used



**ADDITIONAL GRADING INFORMATION**  
Polish **EXCELLENT**  
Symmetry **EXCELLENT**  
Fluorescence **NONE**  
Inscription(s) **IGI LG810644799**

Comments: This Laboratory Grown Diamond was created by Chemical Vapor Deposition (CVD) growth process. Type IIa

**COLOR**

D E F G H I J Faint Very Light Light

**CLARITY**

FL	IF	VS <sup>1-2</sup>	VS <sup>1-2</sup>	SI <sup>1-2</sup>	I <sup>1-3</sup>
Flawless	Internally Flawless	Very Very Slightly Included	Very Slightly Included	Slightly Included	Included

**ADDITIONAL GRADING INFORMATION**

Polish **EXCELLENT**  
Symmetry **EXCELLENT**  
Fluorescence **NONE**  
Inscription(s) **IGI LG810644799**  
Comments: This Laboratory Grown Diamond was created by Chemical Vapor Deposition (CVD) growth process. Type IIa



**IGI**



June 16, 2026  
IGI Report No LG810644799  
**ROUND BRILLIANT**  
8.36 - 8.42 X 5.14 MM  
2.23 CARATS  
Color Grade **D**  
Clarity Grade **VVS 2**  
Depth **IDEAL**  
Table **60%**  
Girdle **Medium To Slightly Thick (Faceted)**  
Culet **Pointed**  
Polish **EXCELLENT**  
Symmetry **EXCELLENT**  
Fluorescence **NONE**  
Inscription(s) **IGI LG810644799**  
Comments: This Laboratory Grown Diamond was created by Chemical Vapor Deposition (CVD) growth process. Type IIa