



ELECTRONIC COPY

LG810644384
Report verification at igi.org



June 15, 2026
IGI Report Number **LG810644384**
Description **LABORATORY GROWN DIAMOND**
Shape and Cutting Style **CUSHION BRILLIANT**
Measurements **9.01 X 6.41 X 4.30 MM**
GRADING RESULTS
Carat Weight **2.02 CARATS**
Color Grade **E**
Clarity Grade **VVS 2**

LABORATORY GROWN DIAMOND REPORT

June 15, 2026
IGI Report Number **LG810644384**
Description **LABORATORY GROWN DIAMOND**
Shape and Cutting Style **CUSHION BRILLIANT**
Measurements **9.01 X 6.41 X 4.30 MM**

GRADING RESULTS

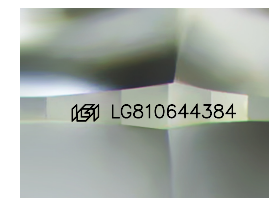
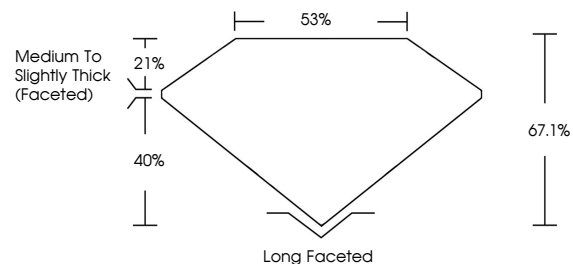
Carat Weight **2.02 CARATS**
Color Grade **E**
Clarity Grade **VVS 2**

ADDITIONAL GRADING INFORMATION

Polish **EXCELLENT**
Symmetry **EXCELLENT**
Fluorescence **NONE**
Inscription(s) **IGI LG810644384**

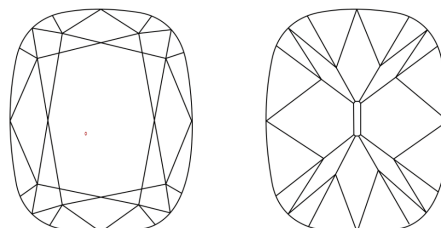
Comments: This Laboratory Grown Diamond was created by Chemical Vapor Deposition (CVD) growth process.
Type IIa

PROPORTIONS



Sample Image Used

CLARITY CHARACTERISTICS



KEY TO SYMBOLS

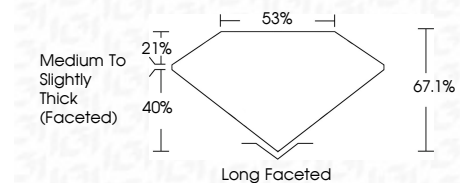
Red symbols indicate internal characteristics.
Green symbols indicate external characteristics.

COLOR

D E F G H I J Faint Very Light Light

CLARITY

FL	IF	VVS ¹⁻²	VS ¹⁻²	SI ¹⁻²	I ¹⁻³
Flawless	Internally Flawless	Very Very Slightly Included	Very Slightly Included	Slightly Included	Included



ADDITIONAL GRADING INFORMATION

Polish **EXCELLENT**
Symmetry **EXCELLENT**
Fluorescence **NONE**
Inscription(s) **IGI LG810644384**
Comments: This Laboratory Grown Diamond was created by Chemical Vapor Deposition (CVD) growth process.
Type IIa



IGI



June 15, 2026
IGI Report No LG810644384
CUSHION BRILLIANT
9.01 X 6.41 X 4.30 MM
2.02 CARATS
E
VVS 2
67.1%
85%
Medium to Slightly Thick (Faceted)
Long Faceted
EXCELLENT
EXCELLENT
NONE
IGI LG810644384
Comments: This Laboratory Grown Diamond was created by Chemical Vapor Deposition (CVD) growth process.
Type IIa