



ELECTRONIC COPY

LG810639983
Report verification at igi.org



June 18, 2026
IGI Report Number: LG810639983
Description: LABORATORY GROWN DIAMOND
Shape and Cutting Style: ROUND BRILLIANT
Measurements: 6.50 - 6.53 X 4.07 MM
GRADING RESULTS
Carat Weight: 1.05 CARAT
Color Grade: E
Clarity Grade: VVS 1
Cut Grade: EXCELLENT

June 18, 2026
IGI Report Number: LG810639983
Description: LABORATORY GROWN DIAMOND
Shape and Cutting Style: ROUND BRILLIANT
Measurements: 6.50 - 6.53 X 4.07 MM

GRADING RESULTS

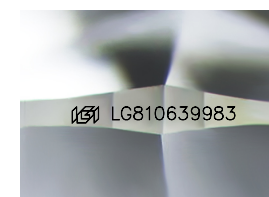
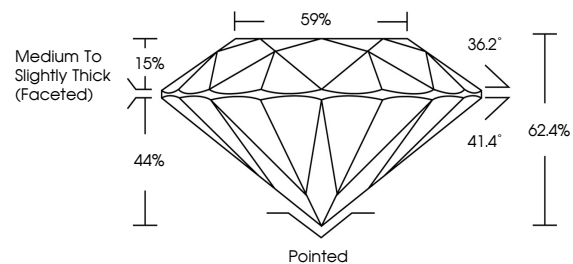
Carat Weight: 1.05 CARAT
Color Grade: E
Clarity Grade: VVS 1
Cut Grade: EXCELLENT

ADDITIONAL GRADING INFORMATION

Polish: EXCELLENT
Symmetry: EXCELLENT
Fluorescence: NONE
Inscription(s): IGI LG810639983

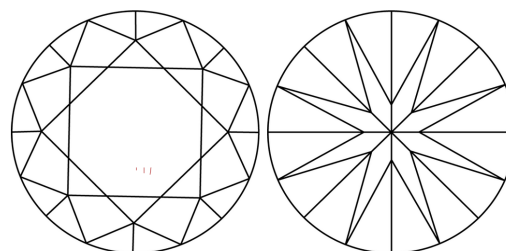
Comments: This Laboratory Grown Diamond was created by Chemical Vapor Deposition (CVD) growth process. Type IIa

PROPORTIONS



Sample Image Used

CLARITY CHARACTERISTICS



KEY TO SYMBOLS

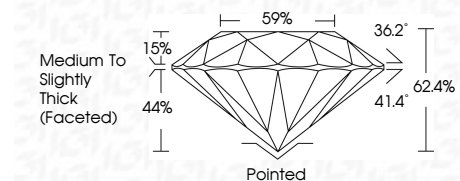
Red symbols indicate internal characteristics.
Green symbols indicate external characteristics.

COLOR

D E F G H I J Faint Very Light Light

CLARITY

Table with columns: FL, IF, VS 1-2, VS 1-2, SI 1-2, I 1-3 and corresponding descriptions: Flawless, Internally Flawless, Very Very Slightly Included, Very Slightly Included, Slightly Included, Included



ADDITIONAL GRADING INFORMATION

Polish: EXCELLENT
Symmetry: EXCELLENT
Fluorescence: NONE
Inscription(s): IGI LG810639983
Comments: This Laboratory Grown Diamond was created by Chemical Vapor Deposition (CVD) growth process. Type IIa



Summary of report details including date, report number, description, measurements, grading results, and additional information.