



ELECTRONIC COPY

LG810639571
Report verification at igi.org



June 18, 2026
IGI Report Number **LG810639571**
Description **LABORATORY GROWN DIAMOND**
Shape and Cutting Style **PEAR BRILLIANT**
Measurements **9.53 X 5.61 X 3.37 MM**
GRADING RESULTS
Carat Weight **1.07 CARAT**
Color Grade **FANCY INTENSE PINK**
Clarity Grade **VVS 2**

June 18, 2026
IGI Report Number **LG810639571**
Description **LABORATORY GROWN DIAMOND**
Shape and Cutting Style **PEAR BRILLIANT**
Measurements **9.53 X 5.61 X 3.37 MM**

GRADING RESULTS

Carat Weight **1.07 CARAT**
Color Grade **FANCY INTENSE PINK**
Clarity Grade **VVS 2**

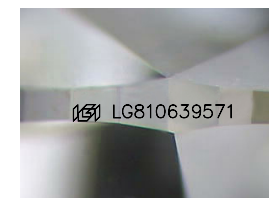
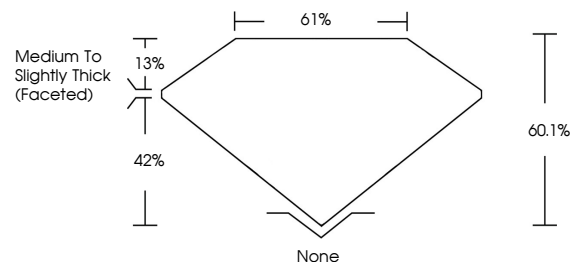
ADDITIONAL GRADING INFORMATION

Polish **EXCELLENT**
Symmetry **EXCELLENT**
Fluorescence **SLIGHT**
Inscription(s) **IGI LG810639571**

Comments: This Laboratory Grown Diamond was created by Chemical Vapor Deposition (CVD) growth process.
Indications of post-growth treatment.

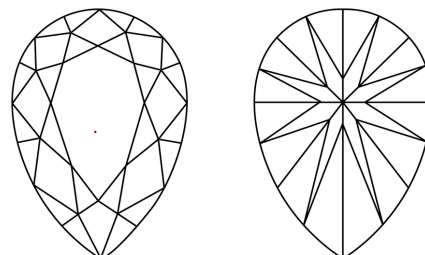
Secondary color: Brown

PROPORTIONS



Sample Image Used

CLARITY CHARACTERISTICS



KEY TO SYMBOLS

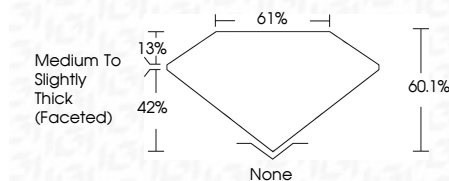
Red symbols indicate internal characteristics.
Green symbols indicate external characteristics.

COLOR

D E F G H I J Faint Very Light Light

CLARITY

FL	IF	VVS ¹⁻²	VS ¹⁻²	SI ¹⁻²	I ¹⁻³
Flawless	Internally Flawless	Very Very Slightly Included	Very Slightly Included	Slightly Included	Included



ADDITIONAL GRADING INFORMATION

Polish **EXCELLENT**
Symmetry **EXCELLENT**
Fluorescence **SLIGHT**
Inscription(s) **IGI LG810639571**
Comments: This Laboratory Grown Diamond was created by Chemical Vapor Deposition (CVD) growth process.
Indications of post-growth treatment.
Secondary color: Brown



June 18, 2026
IGI Report No LG810639571
PEAR BRILLIANT
9.53 X 5.61 X 3.37 MM
1.07 CARAT
FANCY INTENSE PINK
VVS 2
60.1%
61%
Medium to Slightly Thick (Faceted)
None
EXCELLENT
EXCELLENT
SLIGHT
IGI LG810639571
Comments: This Laboratory Grown Diamond was created by Chemical Vapor Deposition (CVD) growth process.
Indications of post-growth treatment.
Secondary color: Brown