



**ELECTRONIC COPY**

LG810639562  
Report verification at igi.org



June 18, 2026  
IGI Report Number **LG810639562**  
Description **LABORATORY GROWN DIAMOND**  
Shape and Cutting Style **PRINCESS CUT**  
Measurements **6.21 X 6.05 X 4.24 MM**  
**GRADING RESULTS**  
Carat Weight **1.38 CARAT**  
Color Grade **FANCY VIVID BLUE**  
Clarity Grade **VS 1**

June 18, 2026  
IGI Report Number **LG810639562**  
Description **LABORATORY GROWN DIAMOND**  
Shape and Cutting Style **PRINCESS CUT**  
Measurements **6.21 X 6.05 X 4.24 MM**

**GRADING RESULTS**

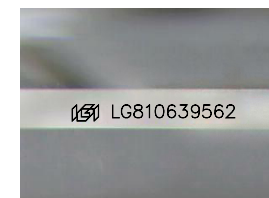
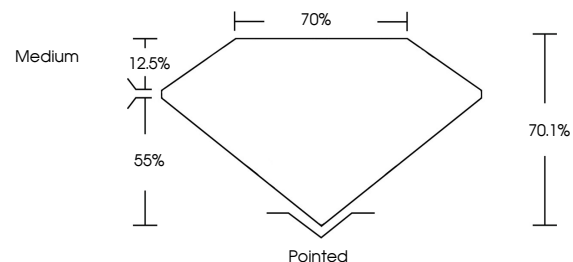
Carat Weight **1.38 CARAT**  
Color Grade **FANCY VIVID BLUE**  
Clarity Grade **VS 1**

**ADDITIONAL GRADING INFORMATION**

Polish **EXCELLENT**  
Symmetry **EXCELLENT**  
Fluorescence **NONE**  
Inscription(s) **IGI LG810639562**

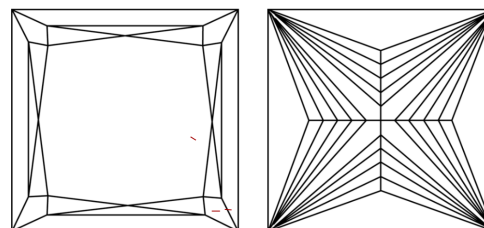
Comments: This Laboratory Grown Diamond was created by Chemical Vapor Deposition (CVD) growth process.  
Indications of post-growth treatment.

**PROPORTIONS**



Sample Image Used

**CLARITY CHARACTERISTICS**



**KEY TO SYMBOLS**

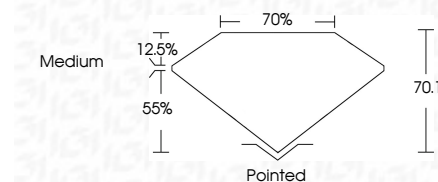
Red symbols indicate internal characteristics.  
Green symbols indicate external characteristics.

**COLOR**

D E F G H I J Faint Very Light Light

**CLARITY**

FL	IF	VS <sup>1-2</sup>	VS <sup>1-2</sup>	SI <sup>1-2</sup>	I <sup>1-3</sup>
Flawless	Internally Flawless	Very Very Slightly Included	Very Slightly Included	Slightly Included	Included



**ADDITIONAL GRADING INFORMATION**

Polish **EXCELLENT**  
Symmetry **EXCELLENT**  
Fluorescence **NONE**  
Inscription(s) **IGI LG810639562**  
Comments: This Laboratory Grown Diamond was created by Chemical Vapor Deposition (CVD) growth process.  
Indications of post-growth treatment.



June 18, 2026  
IGI Report No. LG810639562  
**PRINCESS CUT**  
1.38 CARAT  
6.21 X 6.05 X 4.24 MM  
FANCY VIVID BLUE  
VS 1  
70.1%  
Medium  
Pointed  
EXCELLENT  
EXCELLENT  
NONE  
IGI LG810639562  
Comments: This Laboratory Grown Diamond was created by Chemical Vapor Deposition (CVD) growth process.  
Indications of post-growth treatment.